

THIN TILE

新瓷
多功能环保瓷材

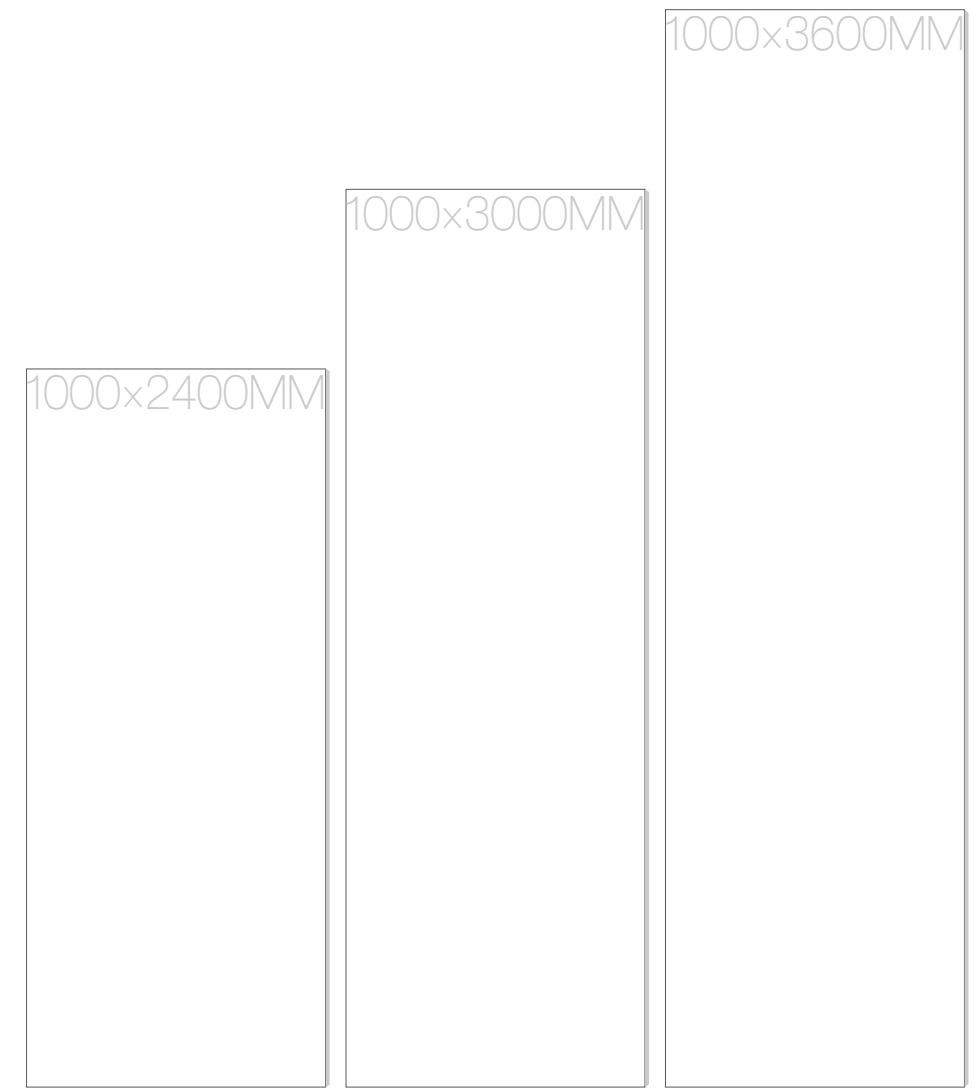
THIN TILE
PORCELAIN



廈門三榮陶瓷開發有限公司
XIAMEN SANWON CERAMIC LTD.
地址：福建省廈門市翔安區內厝
Add: Neicuo XiangAn Xiamen China E-mail:sale@sanwon.net
Homepage:www.sanwon.net

2019.10





极致大板·以薄触感

4.5MM

EXTREMELY LARGE BOARD WITH A THIN TOUCH

可接受定制——宽度 800-1200mm 高度 3600mm 以下

三荣陶瓷简介

SANWON CERAMIC INTRODUCTION

厦门三荣陶瓷开发有限公司成立于 1993 年，总部坐落于福建省厦门翔安，是由台湾集六十余年瓷砖产销经验的三和、三普、协山三大知名窑业集团联合斥资 4000 万美元成立的综合性陶瓷集团。主要产品包括：陶瓷薄板、仿古砖、外墙砖、马赛克等。

全厂占地 20 万平米，采用意大利进口设备。自 1995 年初集团正式投产以来，即因产品经检验无辐射作用的超高质量，荣获国家建材局核定为“优质瓷砖”的最高评价。并先后荣获“福建省著名商标”、“福建省名牌产品”、“中国第一份出口产品安全质量认证证书”、“厦门高新技术企业”、“中国绿色建筑陶瓷推荐证书”等荣誉。三荣陶瓷业已通过“ISO9001:2015”、“ISO14001:2004”双认证，为顾客提供更坚实的质量保证。

“三荣品质，世界知道”，为“中国扬眉吐气，让世界刮目相看”是三荣力求突破的目标。目前集团产品已广销海内外，更风行美日市场。展望未来，三荣陶瓷将继续秉持“诚信、团结、开拓、分享”的经营理念，为创造更美丽的环境空间而努力！

Xiamen Sanwon Ceramic Ltd., established in 1993, is a large-scale kiln group jointly invested by three famous Taiwan kiln groups as San ho, San pu and Xiешan, all of which have over 60 years experience in production and sales, with an investment of USD40 million.

The headquarters of the enterprise locates in Xiang'an, Xiamen of Fujian Province and the Ri Sheng Plant, which produces glass blocks, is located in Zhangzhou. Sanwon Group enjoys excellent ocean, land and air transport advantages with such important transport constructions as Fu-Xia Expressway, Quanzhou International Airport, Xiamen International Airport, Xiamen Railway Station and Liu Wu Dian Port with a potential 5000t cargoes within 50km away from it, which enables the group to finish the supplies and orders from all over the world. The whole plant

covers an area of 200,000sqm, the full load kiln energy can operate 16 automatic and rapid roller kilns at the same time, and the whole plant adopts currently most advanced Italy SACMI Rapid Roller Kilns.

Since the group was listed in market in 1995, it has been approved as the highest evaluation of Excellent Ceramic Tile by State Administration of Construction Materials due to its high quality products without radiation, and for which, the People's Government of Fujian Province granted the group with the reputation of Provincial Famous Trade Mark. The group also obtained the First Safety Quality Certification for Export Products, which is the highest reputation of the nation, granted by China Quality Certification Center for Import and Export due to its National Best Products, which was upgraded as ISO9001 International Quality

Certification in 2001, all of which provide more solid quality and assurance for the customers. To promote environmental protection concept and the development of energy-saving in future, the group was devoted into the reformation and was granted by the People's Government of Xiamen as Advanced Enterprise for Energy-saving in 2006 and the High-tech Enterprise Certification granted by Xiamen Administration of Science and Technology in May, 2007. Till now, the serious products of the Group, except being famous in both home and abroad and popular in Japan, have successfully entered into the wide European and American markets and have entered the world largest American supermarket for construction materials and international first class brand, which has been the hundred year story of China.

INTRODUCTION

岩板 5 大优势

BIG SLABS 5 ADVANTAGES



超大规格，效果大气

三荣拥有 1000×2400mm, 1000×3000mm, 1000×3600mm 这三种行业最大规格的岩板。单块岩板可以承载更多更流畅的纹理脉络，不仅增加家居的空间感，还给人一种简约大气的感觉。

绿色环保，健康生活

三荣岩板原材料选自纯天然黏土与非金属原料，让家居更加绿色，生活更加健康。

切割自由，铺贴方便

三荣岩板可铺贴的面积比传统瓷砖的面积要大，设计师可根据设计需求来任意切割岩板，运用灵活自如，达到一板多用的功能。不仅可以节省铺贴时间，还降低装修成本。

轻薄材质，搬运方便

三荣岩板尽管拥有超大规格，厚度却只有 4.5 毫米，材质轻盈，搬运更加省力，运输较为方便。铺贴实现“无缝链接”，减少藏污纳垢的缝隙，避免重复打扫的麻烦。

应用广泛，灵活多变

三荣岩板可应用于家装与公装，可铺贴的地方有地板，上墙，楼梯，甚至充当茶几，书桌等。应用广泛，组合搭配多样，运用灵活多变，因此受到广大群众的喜爱。

升级工艺 卓越性能

UPGRADE PROCESS SUPERIOR PERFORMANCE

3D 立体塑印技术

运用先进的立体塑印技术，通过多层次、多角度的高清立体绘印，岩板表面的花纹与色彩更加细腻逼真，图案更显出层次感、立体感，栩栩如生，达到一个新的表现境界。

选用进口原料

选用欧洲进口优质原料，加工制成坚固岩板材身，具备防滑、防渗、防断、防污、耐磨等卓越性能，极大增加岩板的使用寿命，无需时常打理与更换，使用更省心。

材质绿色环保

高致密度的石材层面使得板体吸水率低于 0.5%，能够强力抵抗任何污浊的液体。加上坯底为无放射性的绿色环保原料，解决了石材的放射性与渗污问题，低碳环保。

4.5MM

INDEX

01 企业简介

- p01-02 企业简介 COMPANY PROFILE
- p03-04 产品优势 PRODUCT ADVANTAGES
- p05 工艺性能 PROCESS PERFORMANCE

02 产品系列

- p07-10 纯色（釉面） SOLID COLOR(GLAZED)
- p11-14 纯色（通体） PURE COLOR (FULL BODY)
- p15-18 古堡 CASTLE
- p19-22 摩瑞 MERCURY
- p23-26 艾绅 ANCIENT WOOD
- p27-28 沃德 WOOD
- p29-30 微风 BREEZE
- p31-34 布纹 WALL PAPER
- p35-38 帝国 EMPIRE
- p39-40 高登 GOLDEN AGE
- p41-42 铁锈 RUST
- p43-44 硅岩 SILICASTONE
- p45-46 威尔 WAVE
- p47-48 珍珠 PEARL
- p49-50 麻石 GRANITE
- p51-52 纳布 NEBULA
- p53-54 时尚 STYLE SELECTIONS
- p55-56 线石 STONE LINE
- p57-60 水泥 CEMENT
- p61-62 云彩 CLOUD
- p63-64 卡拉拉（一体六面） CARRARA (SIX PATTERNS)
- p65-70 卡拉拉（对拼） CARRARA(SYMMETRY)
- p71-72 卡拉拉（四连拼） CARRARA(FOUR PATTERNS)
- p73-74 卡拉拉（十连拼） CARRARA(TEN PATTERNS)
- p75-78 客定品 CUSTOMIZED PRODUCT

03 技术手册

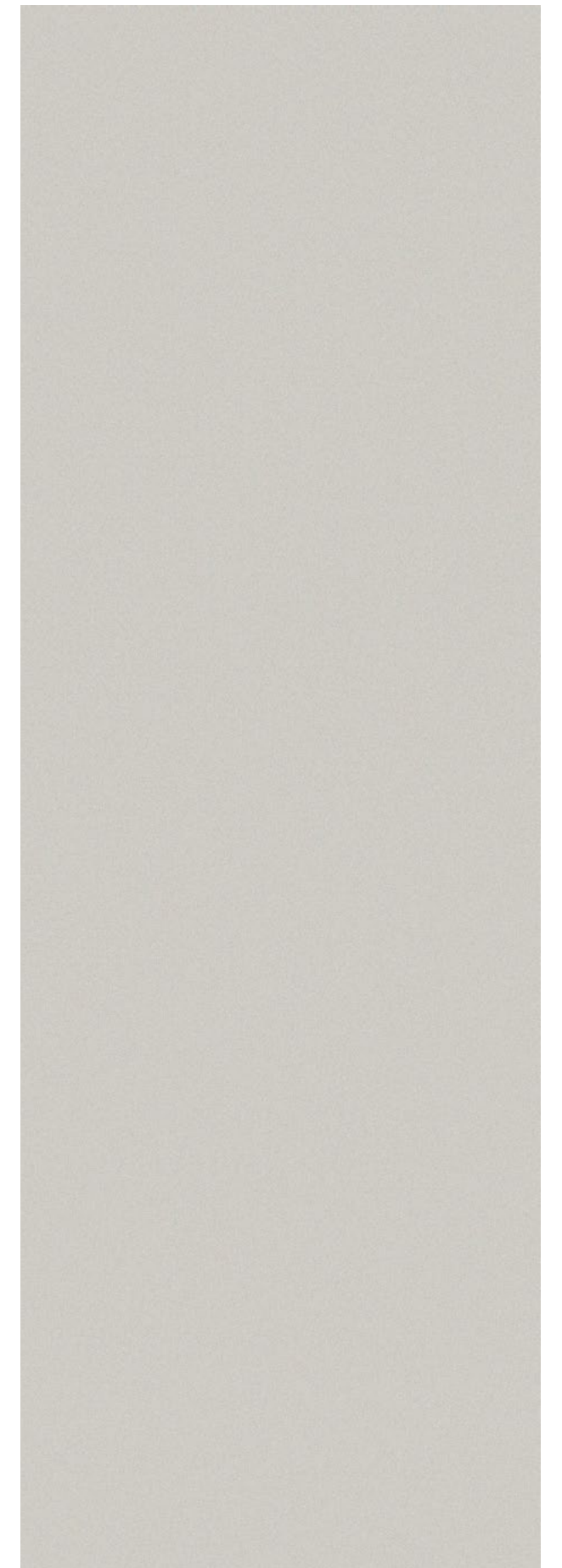
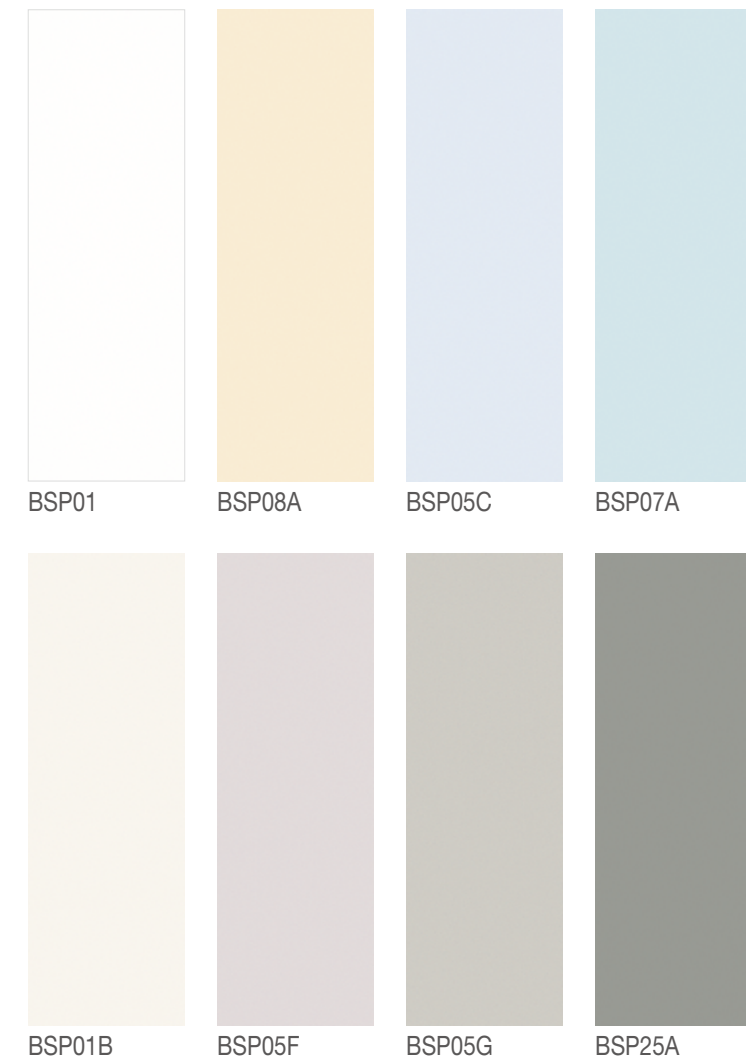
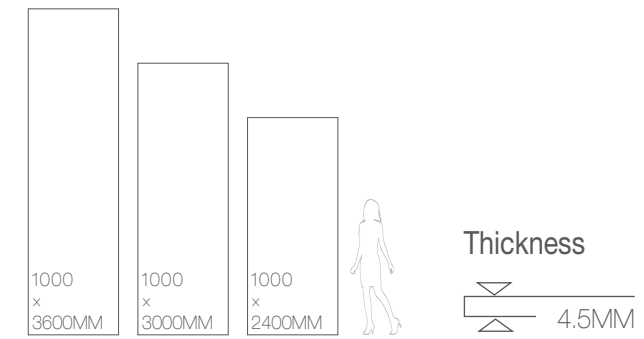
- p79-105 应用空间 APPLICATION SPACE
- p106 重点工程 KEY PROJECTS
- p107-118 产品总览 PRODUCT OVERVIEW
- p119-120 施工说明 TECHNICAL DETAILS
- p121-122 技术参数 TECHNICAL PARAMETERS



SOLID COLOR(GLAZED) / BSP09 / 1000x3000MM

纯色 (釉面) SOLID COLOR(GLAZED)

size

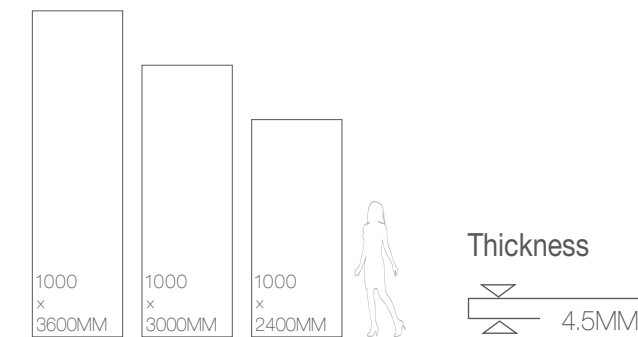




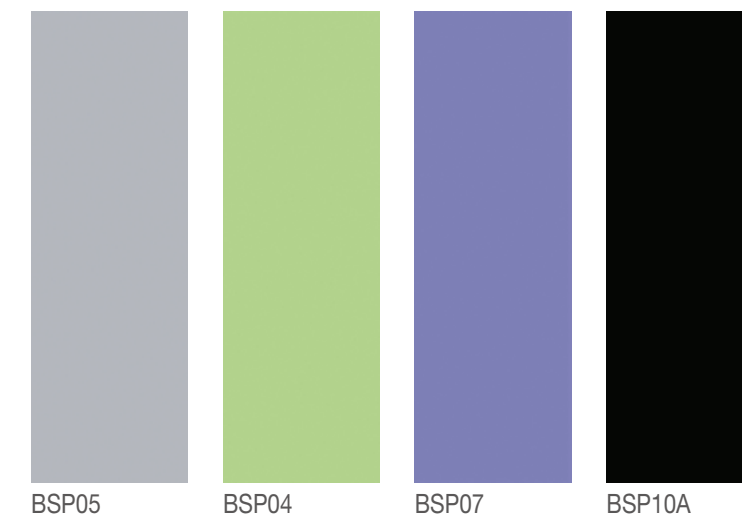
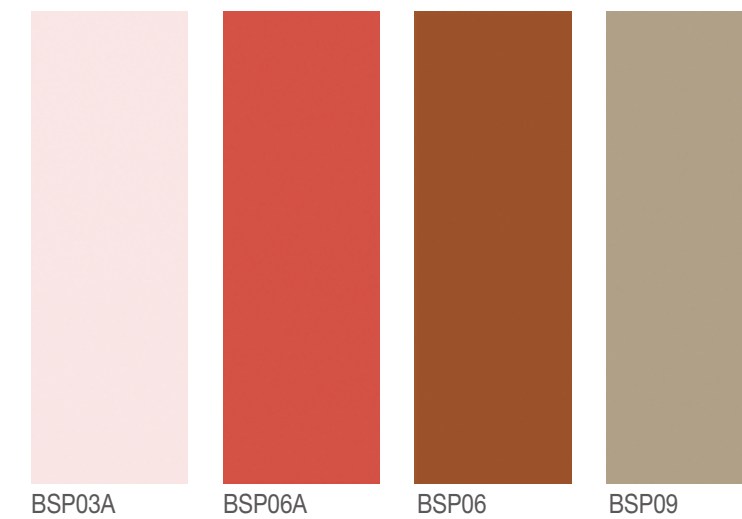
SOLID COLOR (GLAZED) / BSP10A / 1000x3000MM

纯色 (釉面) SOLID COLOR (GLAZED)

size



- 吸水率E<0.5%
- 高硬度
- 耐刮磨
- 抗冻
- 耐酸碱
- 防火
- 超强耐脏
- 食品级表面
- 二次装修
- 建筑外墙
- 建筑内墙
- 厨房台面
- 卫浴台面
- 餐台/茶几
- 橱柜/衣柜
- 室内外门

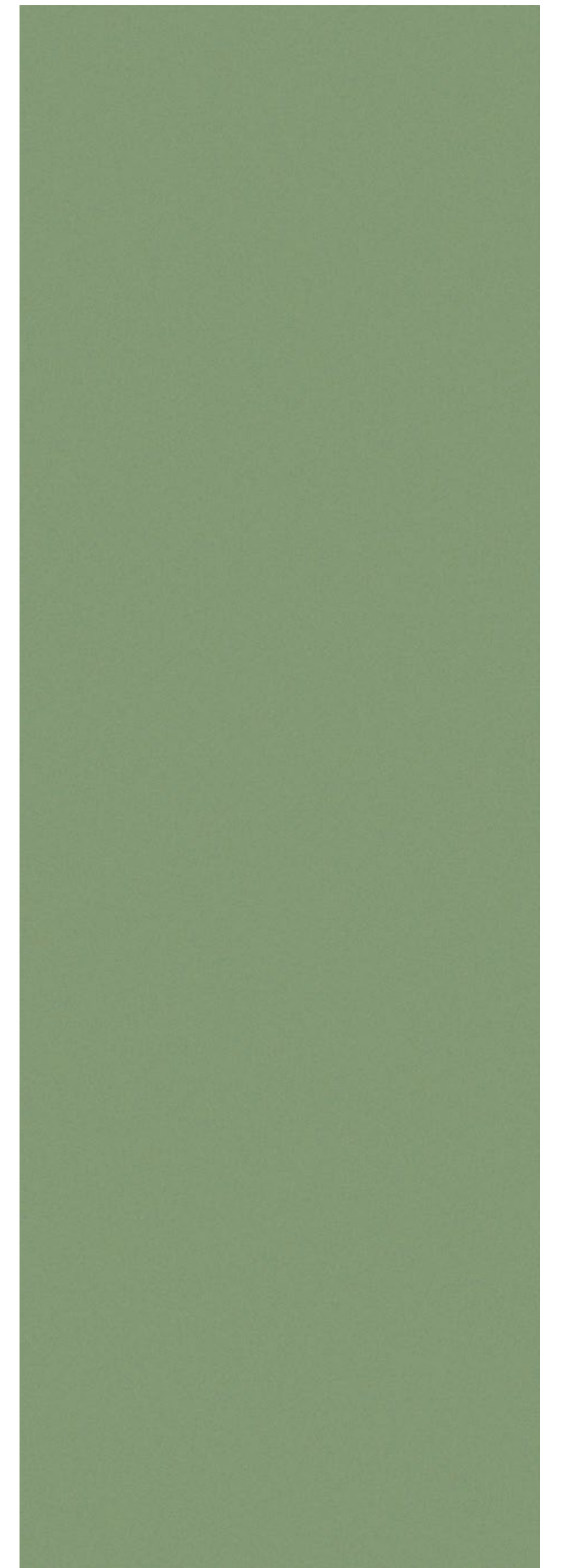
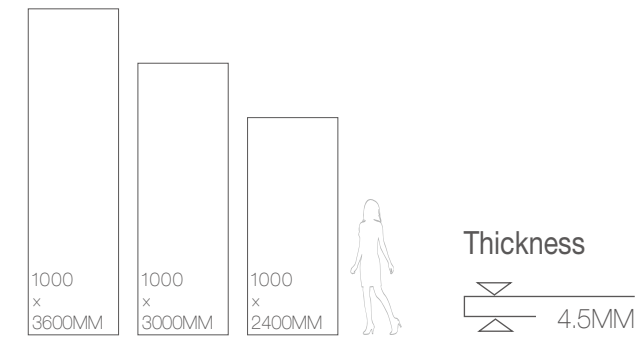




PURE COLOR (FULL BODY) / BSF04+BSF25 / 1000x3000MM

纯色 (通体) PURE COLOR (FULL BODY)

size





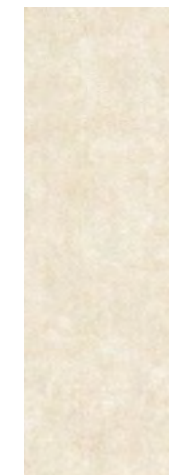
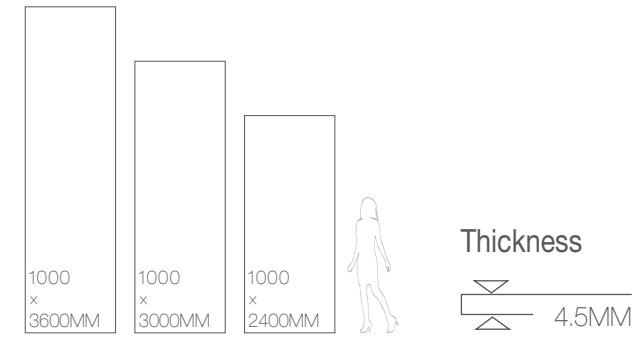
PURE COLOR (FULL BODY) / BSF15+BSF19 / 1000x3000MM



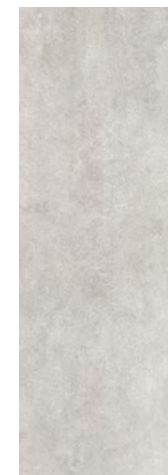
CASTLE / BSR05+BSR10 / 1000x3000MM

古堡 CASTLE

size



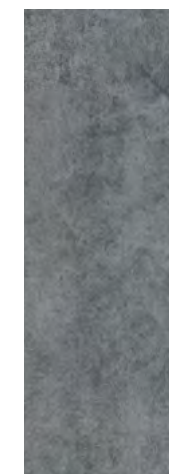
BSR02



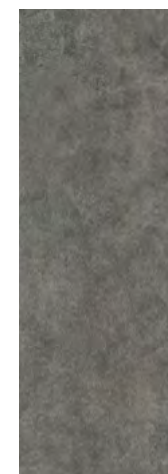
BSR05



BSR15



BSR07



BSR04



BSR10





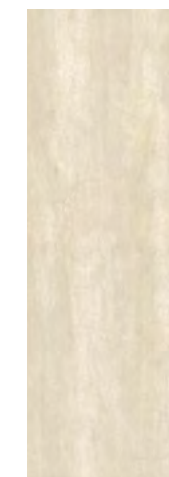
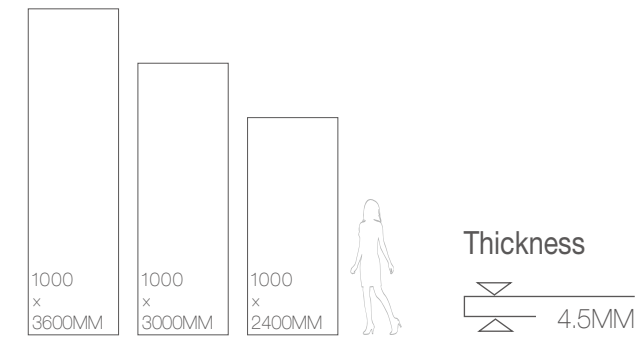
CASTLE / BSR02 / 1000x3000MM



MERCURY / BMCM08+BMCM10 / 1000x3000MM

摩瑞 MERCURY

size



BMCM08



BMCM05



BMCM09



BMCM15



BMCM25



BMCM10





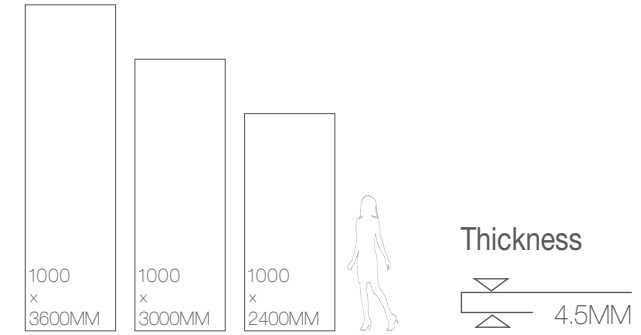
MERCURY / BMCM08+BMCM15 / 1000x3000MM



ANCIENT WOOD / BSV06+BSV03 / 1000x3000MM

艾绅 ANCIENT WOOD

size



BSV05



BSV08



BSV09



BSV10



BSV19



BSV06





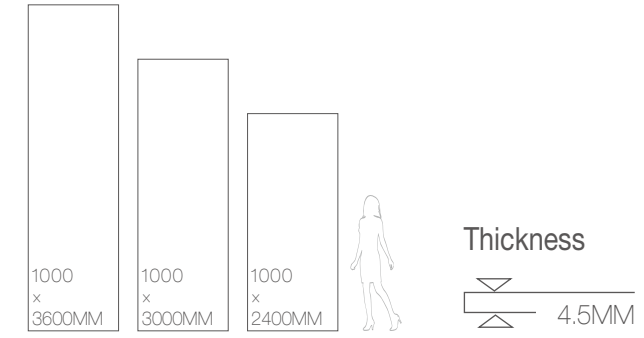
ANCIENT WOOD / BSV06+BSV03 / 1000x3000MM



WOOD / BSY03 / 1000x3000MM

沃德 WOOD

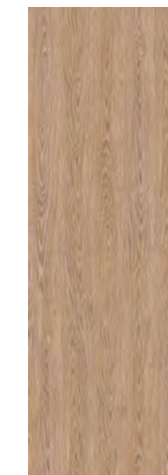
size



BSY01



BSY02



BSY03



BSY06



BSY08



BSY09

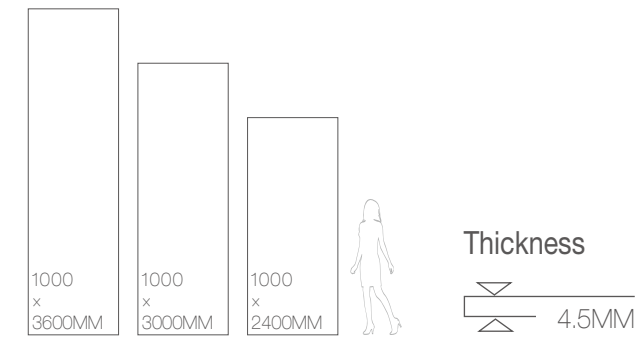




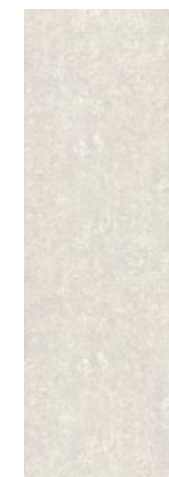
BREEZE / BSI05 / 1000x3000MM

微风 BREEZE

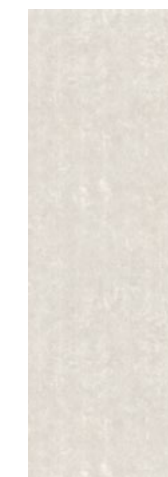
size



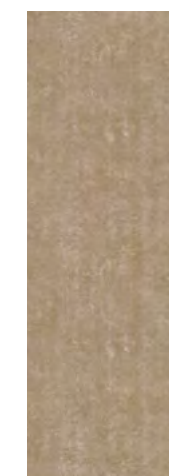
BSI02



BSI05



BSI05A



BSI06



BSI09



BSI10

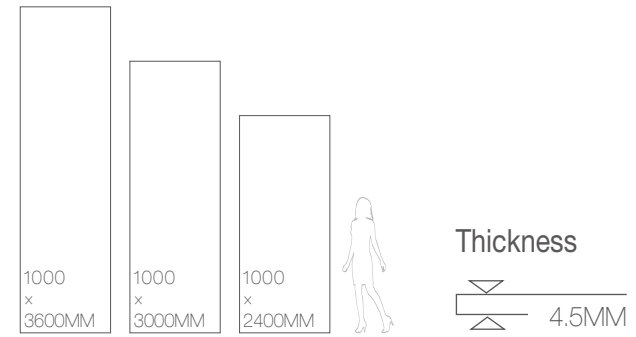




WALL PAPER / BSZ10 / 1000×3000MM

布纹 WALL PAPER

size



BSZ05 BSZ08 BSZ09 BSZ10





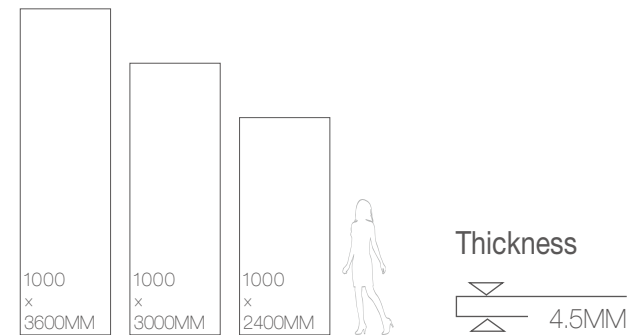
WALL PAPER / BSZ08 / 1000x3000MM



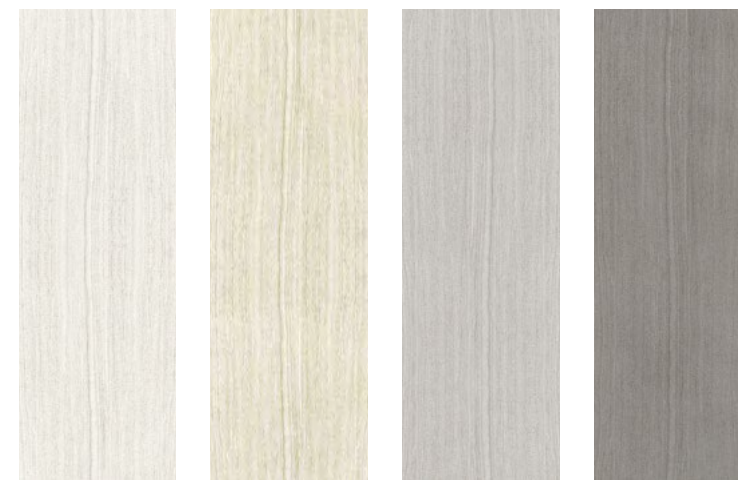
EMPIRE / BSD02+BSD10 / 1000x3000MM

帝国 EMPIRE

size



- 吸水率E<0.5%
- 高硬度
- 耐刮磨
- 抗毒
- 耐酸碱
- 防火
- 超强耐脏
- 食品级表面
- 二次装修
- 建筑外墙
- 建筑内墙
- 厨房&台面
- 卫浴&台面
- 餐台&茶几
- 橱柜&衣柜
- 室内外门



BSD01 BSD02 BSD05 BSD10

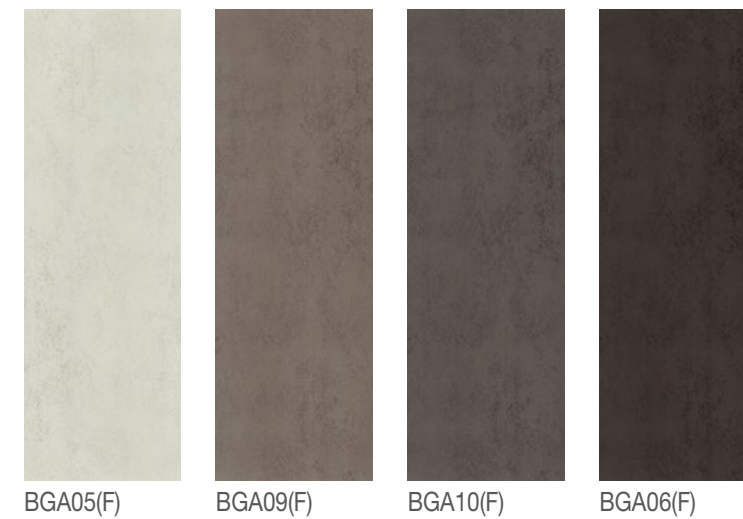
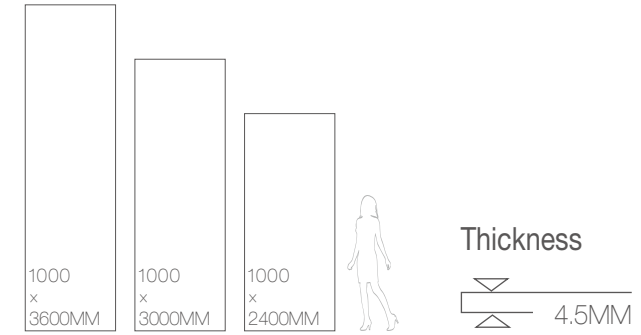




GOLDEN AGE / BGA09(F) / 1000x3000MM

高登 GOLDEN AGE

size

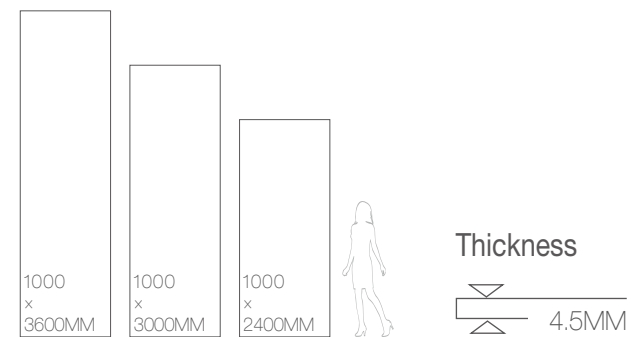




RUST / BSX06(F)+BSX07(F) / 1000x3000MM

铁锈 RUST

size



- | | | | | | | | |
|-----------|------|------|------|------|-------|-------|-------|
| | | | | | | | |
| 吸水率E<0.5% | 高硬度 | 耐刮磨 | 抗渗 | 耐碱碱 | 防火 | 超强耐脏 | 食品级表面 |
| | | | | | | | |
| 二次装饰 | 建筑外墙 | 建筑内墙 | 厨房台面 | 卫浴台面 | 餐台\茶几 | 橱柜\衣柜 | 室内外门 |

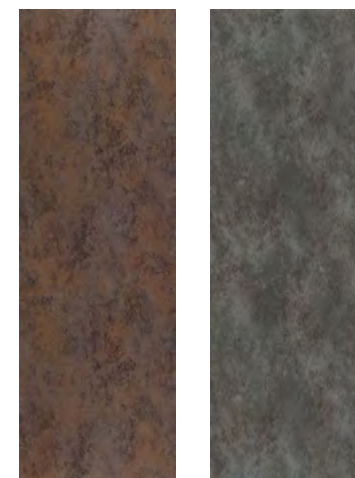


ARTISTIC SPACE

The floor tile with unique texture sets off the whole space, and the design and arrangement of the modern space with both simplicity and line aesthetic sense, describes the most beautiful space with the least strokes, and presents a simple and extraordinary artistic effect.

独具质感的地砖衬托起整个空间，兼具简约与线条美感的现代空间的设计与布置，用最少的笔画描写最美的空间，呈现出简而不凡的艺术效果。

RUST / BSX06(F)+BSX07(F) / 1000x3000MM



BSX06(F)

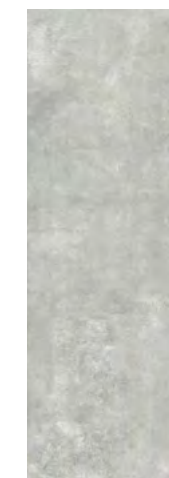
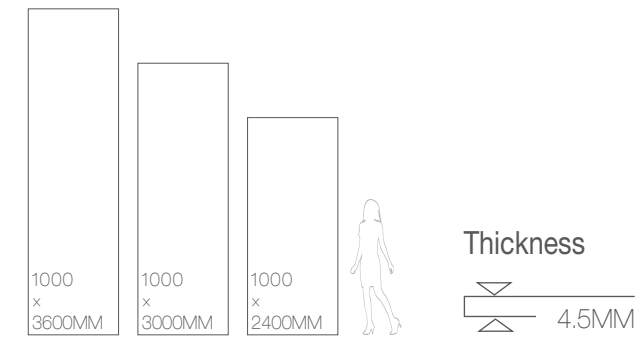
BSX07(F)



SILICASTONE / BSO05 / 1000x3000MM

硅岩 SILICASTONE

size



BSO05



BSO15

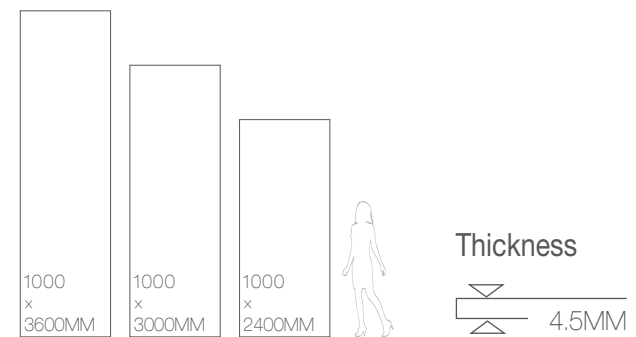




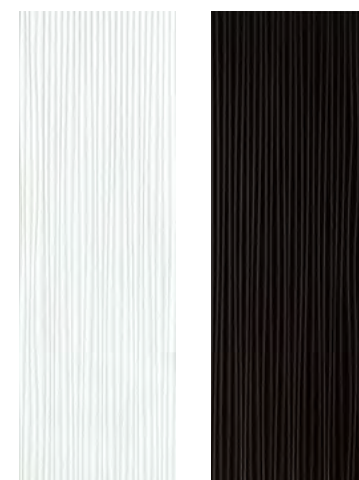
WAVE / BSU10 / 1000x3000MM

威尔 WAVE

size



- 吸水率E<0.5%
- 高硬度
- 耐刮磨
- 抗冻
- 耐酸碱
- 防火
- 超强耐脏
- 食品级表面
- 二次装修
- 建筑外墙
- 建筑内墙
- 厨房&台面
- 卫浴&台面
- 餐台&茶几
- 橱柜&衣柜
- 室内外门



BSU01

BSU10

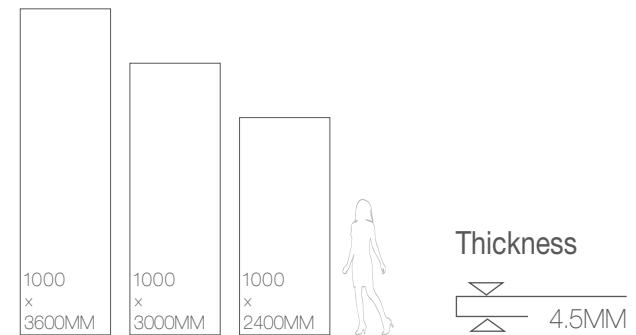




PEARL / BSG10B / 1000x3000MM

珍珠 PEARL

size

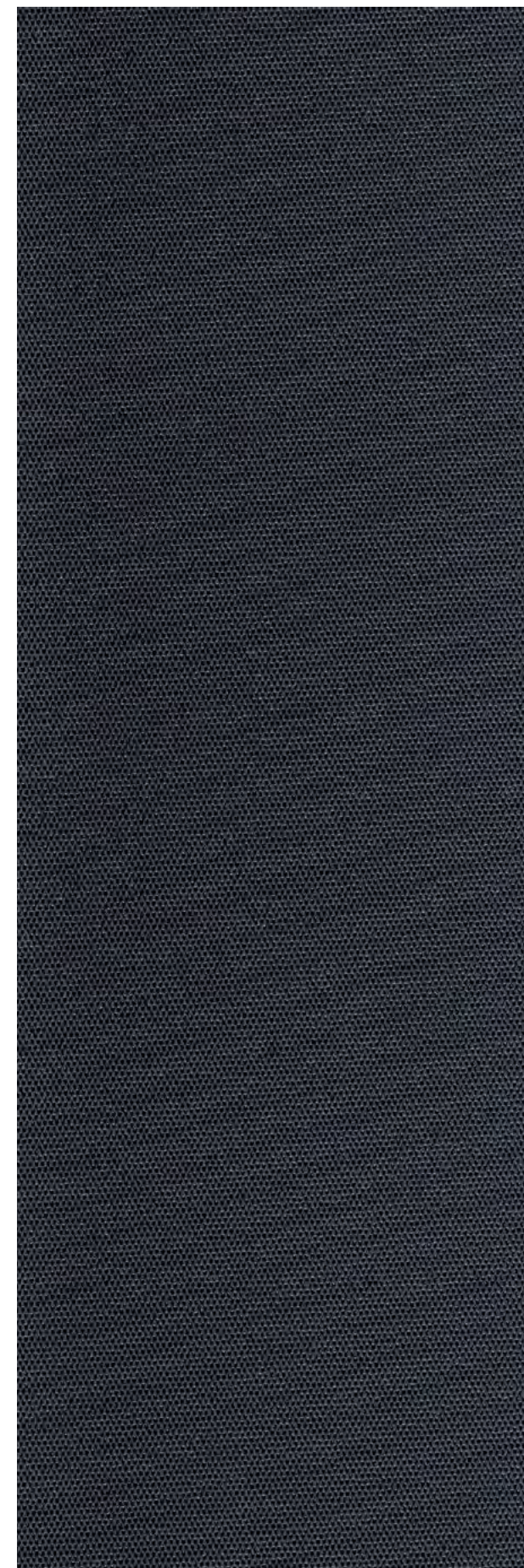


- | | | | | | | | |
|-----------|------|------|------|------|-------|-------|-------|
| | | | | | | | |
| 吸水率E<0.5% | 高硬度 | 耐刮磨 | 抗渗 | 耐碱碱 | 防火 | 超强耐脏 | 食品级表面 |
| | | | | | | | |
| 二次装修 | 建筑外墙 | 建筑内墙 | 厨房台面 | 卫浴台面 | 餐台\茶几 | 橱柜\衣柜 | 室内外门 |



BSG01A

BSG10B

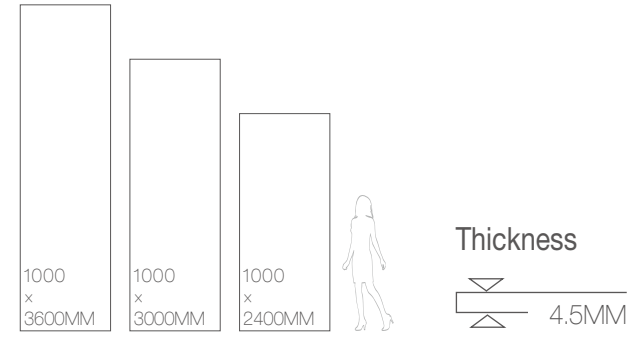




GRANITE / BSF08A / 1000x3000MM

麻石 GRANITE

size



- | | | | | | | | |
|-----------|------|------|------|------|-------|-------|-------|
| | | | | | | | |
| 吸水率E<0.5% | 高硬度 | 耐刮磨 | 抗渗 | 耐酸碱 | 防火 | 超强耐脏 | 食品级表面 |
| | | | | | | | |
| 二次装饰 | 建筑外墙 | 建筑内墙 | 厨房台面 | 卫浴台面 | 餐台/茶几 | 橱柜/衣柜 | 室内/外门 |



BSF08A



BSF10A

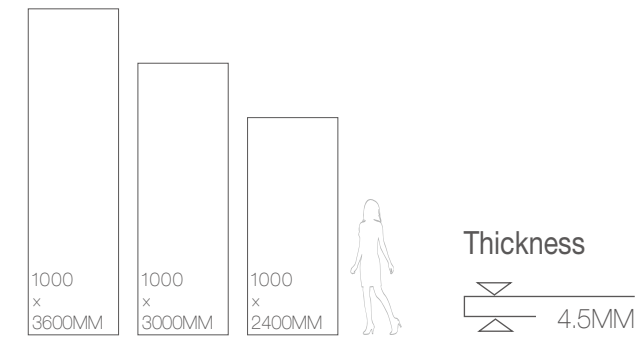




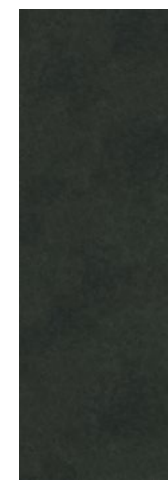
NEBULA / BNB09+BNB10 / 1000x3000MM

纳布 NEBULA

size



BNB09



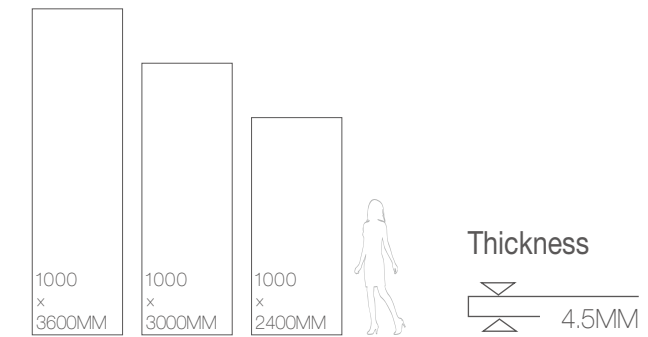
BNB10





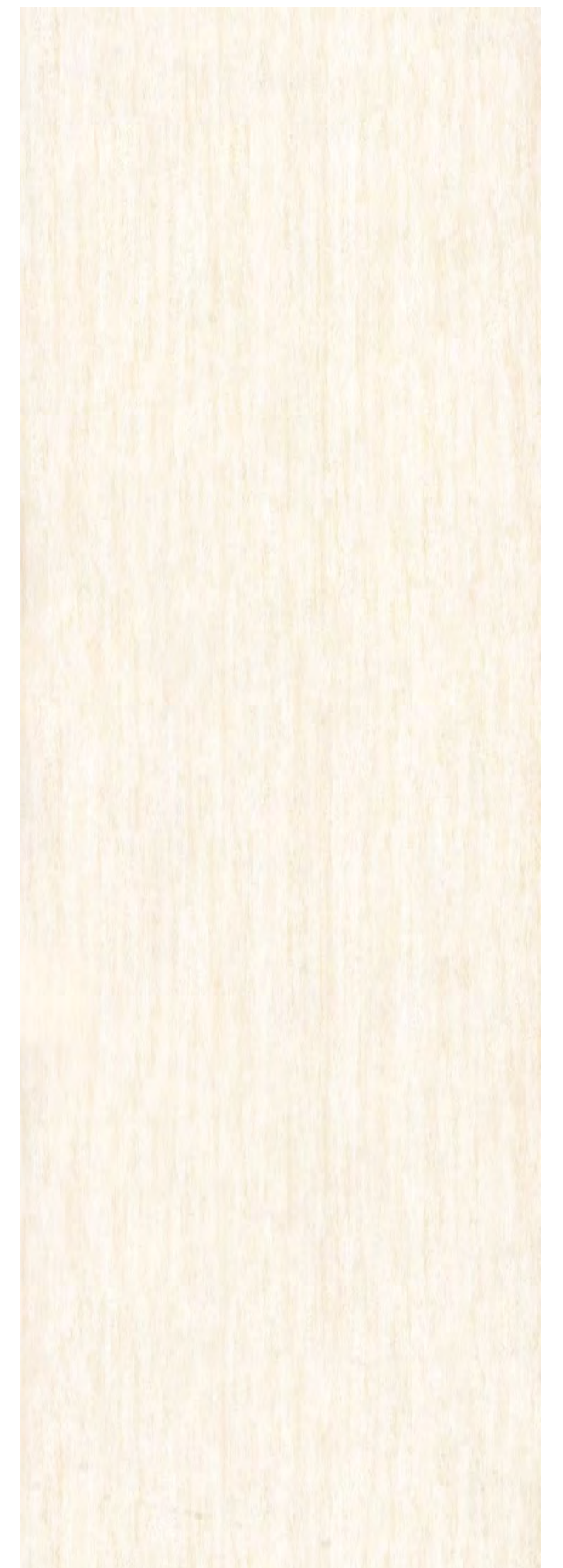
时尚 STYLE SELECTIONS

size



BSS03

BSS02

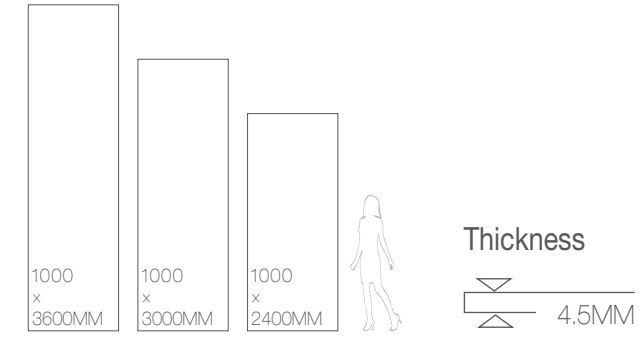




STONE LINE / BSN05A / 1000x3000MM

线石 STONE LINE

size



BSN08A



BSN05A

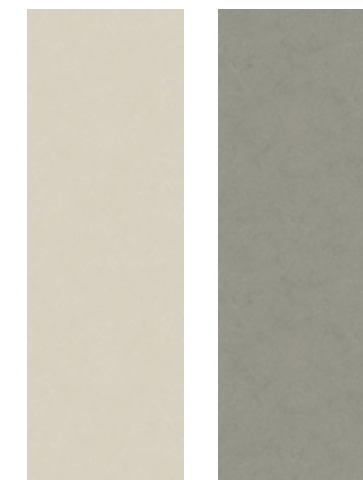
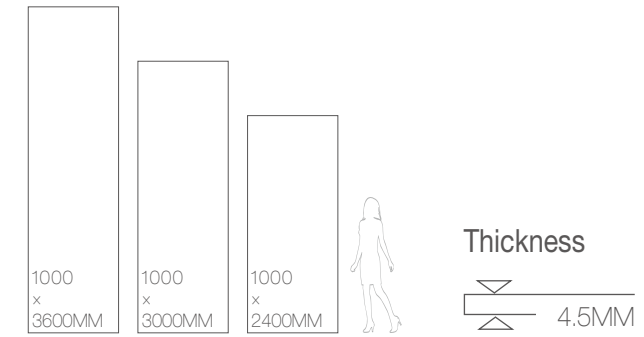




CEMENT / BSA05+BSA08 / 1000x3000MM

水泥 CEMENT

size



BSA08

BSA05





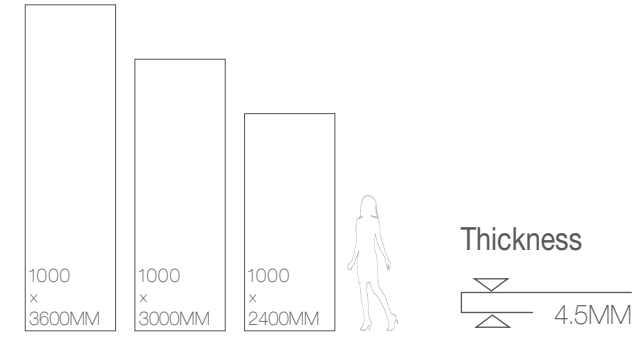
CEMENT / BSA08 / 1000x3000MM



CLOUD / BSP15 / 1000x3000MM

云彩 CLOUD

size



BSP18



BSP15

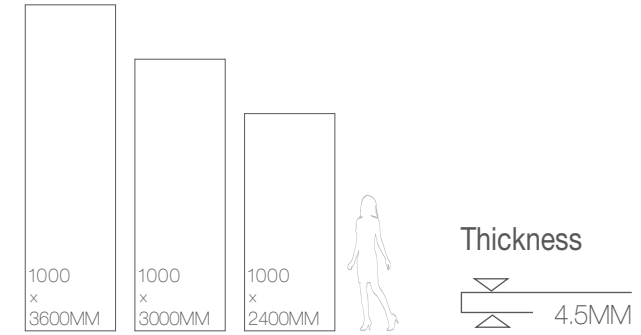




CARRARA (SIX PATTERNS) / BST01B / 1000x3000MM

卡拉拉（一体六面） CARRARA (SIX PATTERNS)

size



BST01B(A)



BST01B(B)



BST01B(C)



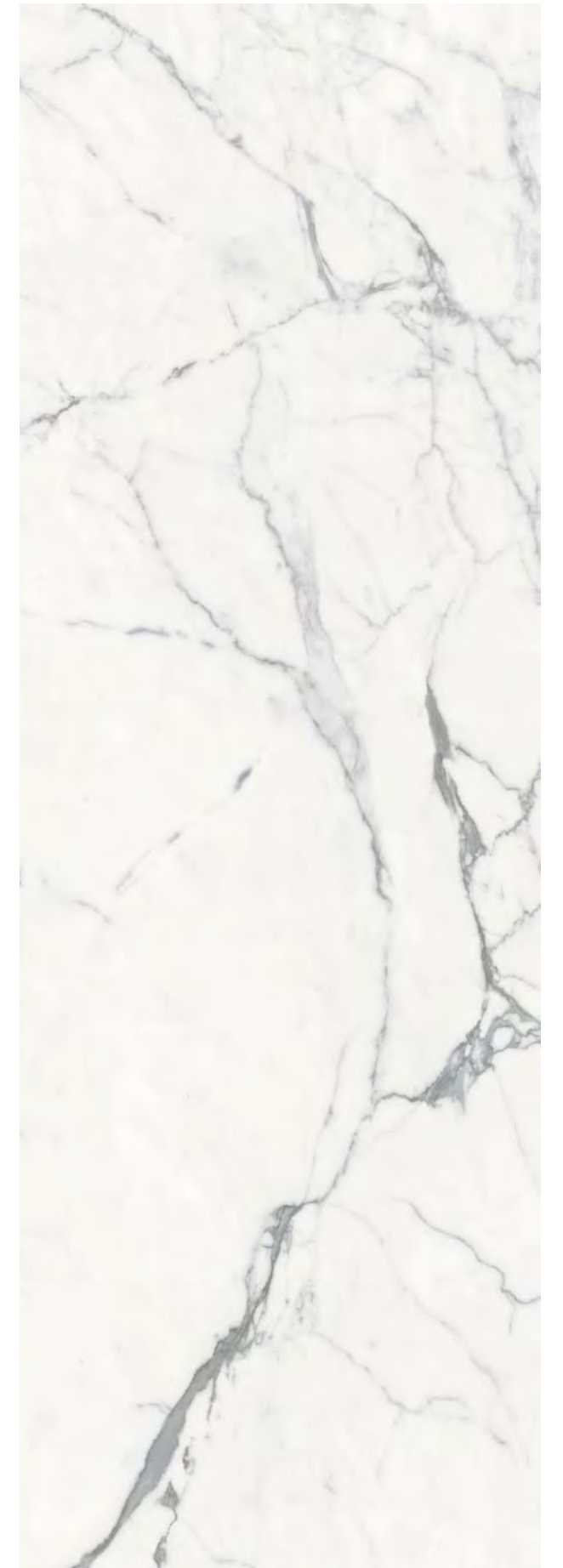
BST01B(D)



BST01B(E)



BST01B(F)

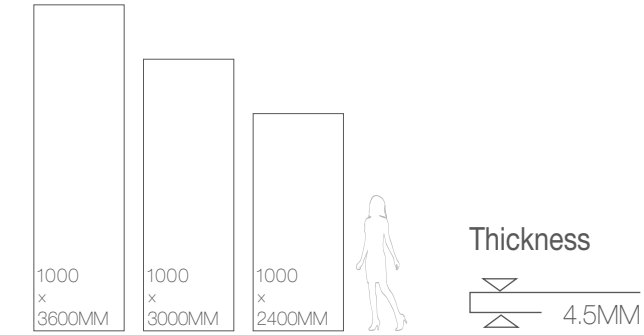




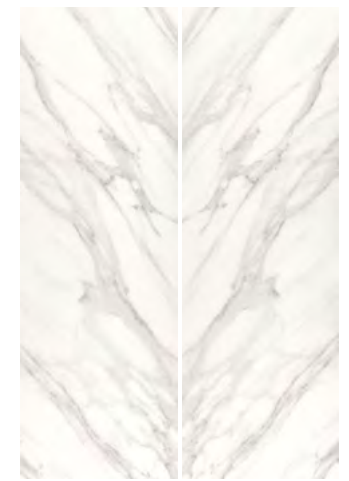
CARRARA(SYMMETRY) / BST01C / 1000x3000MM

卡拉拉 (对拼) CARRARA(SYMMETRY)

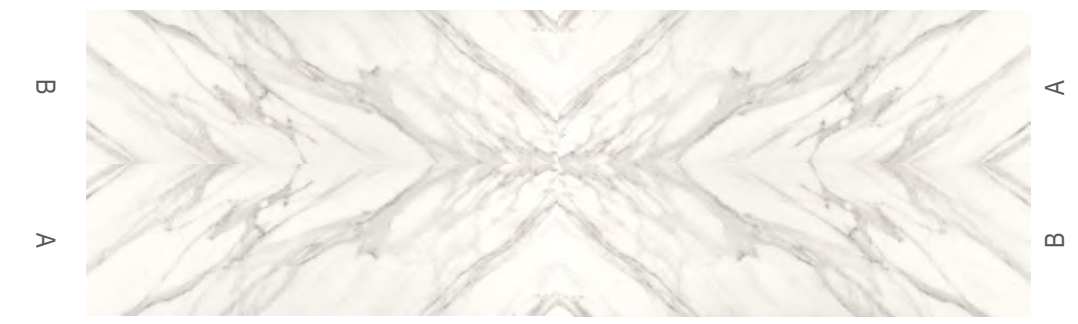
size



- 吸水率E<0.5%
- 高硬度
- 耐刮磨
- 抗冻
- 耐酸碱
- 防火
- 超强耐脏
- 食品级表面
- 二次装修
- 建筑外墙
- 建筑内墙
- 厨房&台面
- 卫浴&台面
- 餐台\茶几
- 橱柜\衣柜
- 室内外门



BST01C(A) BST01C(B)





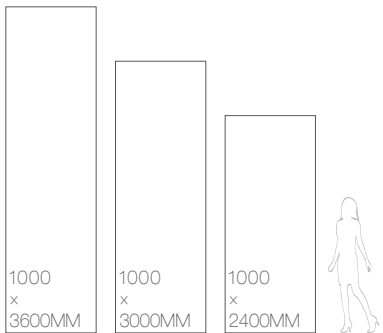
CARRARA(SYMMETRY) / BST01C / 1000x3000MM



CARRARA(SYMMETRY) / BST01F / 1000x3000MM

卡拉拉 (对拼) CARRARA(SYMMETRY)

size



Thickness



- 吸水率E<0.5%
- 高硬度
- 耐刮磨
- 抗冻
- 耐酸碱
- 防火
- 超强耐脏
- 食品级表面
- 二次装修
- 建筑外墙
- 建筑内墙
- 厨房&台面
- 卫浴&台面
- 餐台\茶几
- 橱柜\衣柜
- 室内外门



BST01F(A) BST01F(B)

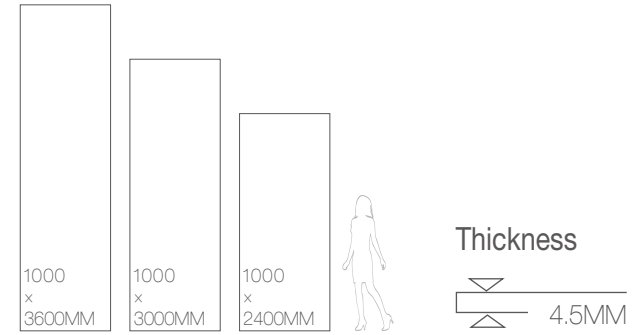




CARRARA(FOUR PATTERNS) / BST01E / 1000x3000MM

卡拉拉 (四连拼) CARRARA(FOUR PATTERNS)

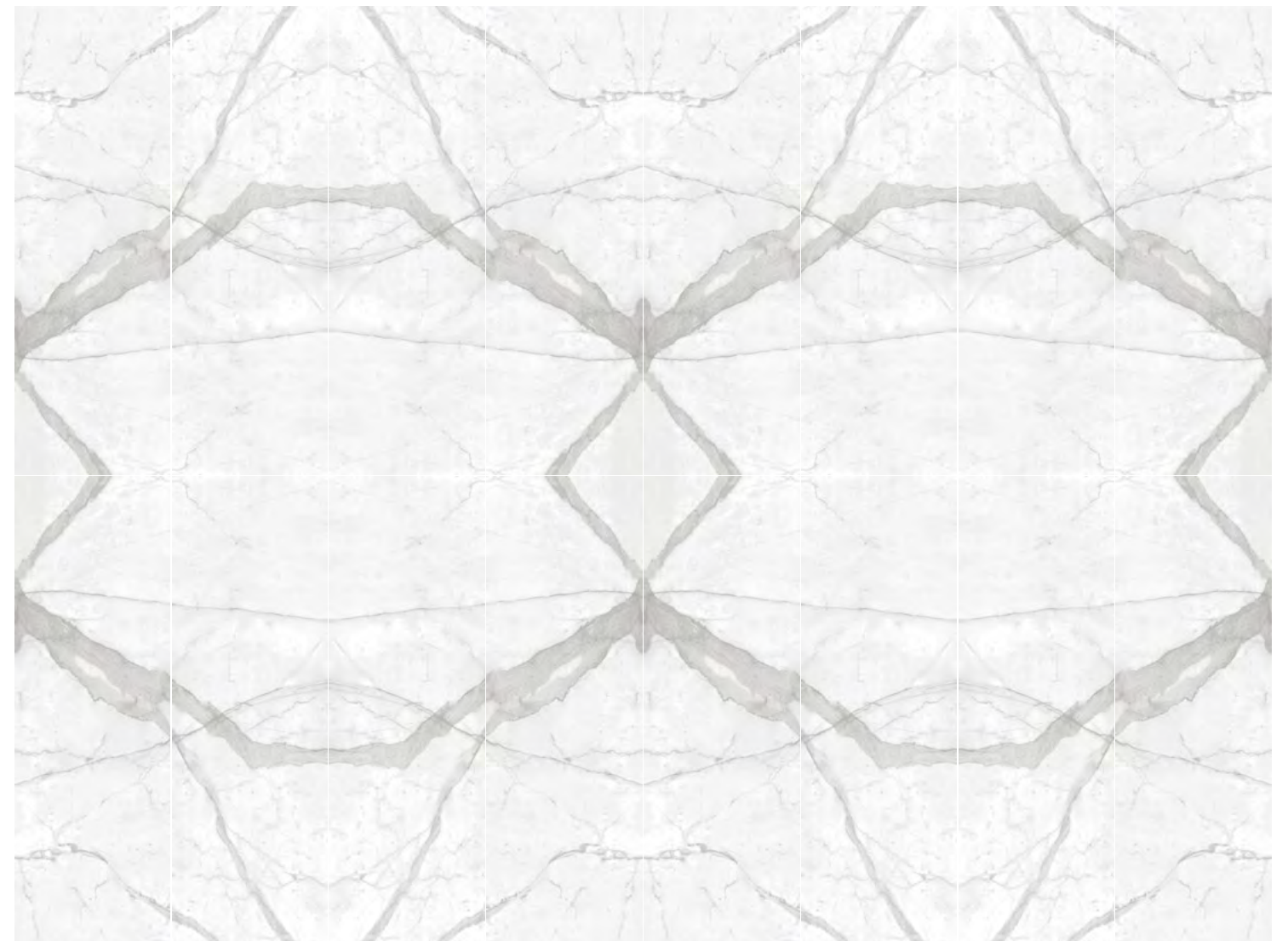
size



- 吸水率E<0.5%
- 高硬度
- 耐刮磨
- 抗渗
- 耐酸碱
- 防火
- 超强耐脏
- 食品级表面
- 二次装修
- 建筑外墙
- 建筑内墙
- 厨房台面
- 卫浴台面
- 餐台/茶几
- 橱柜/衣柜
- 室内/外门



BST01E(A2) BST01E(A1) BST01E(B1) BST01E(B2)

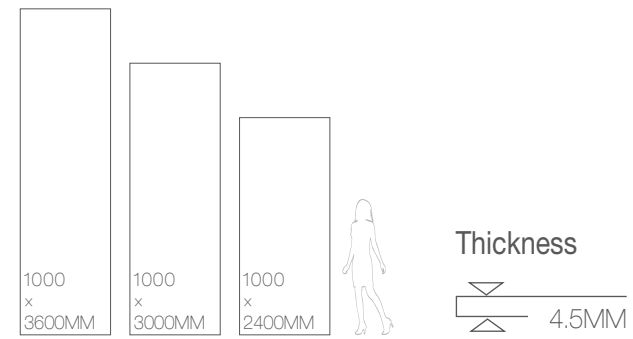




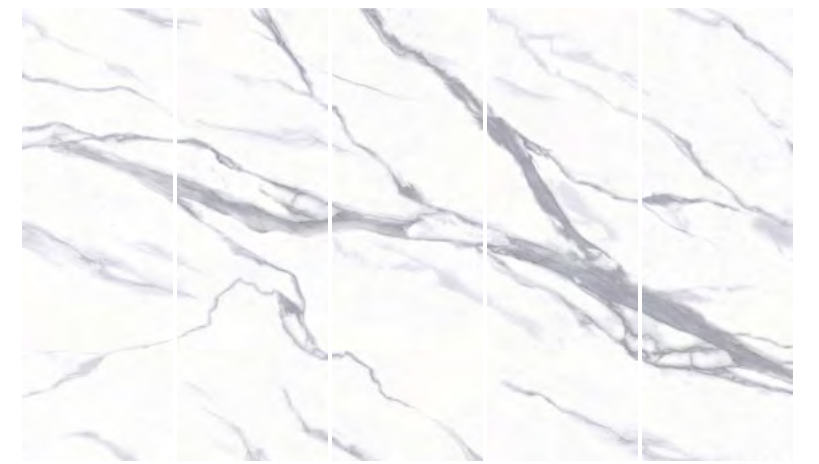
CARRARA(TEN PATTERNS) / BST01D / 1000x3000MM

卡拉拉（十连拼） CARRARA(TEN PATTERNS)

size



- 吸水率E<0.5%
- 高硬度
- 耐刮磨
- 抗渗
- 耐碱
- 防火
- 超强耐脏
- 食品级表面
- 二次装修
- 建筑外墙
- 建筑内墙
- 厨房台面
- 卫浴台面
- 餐台/茶几
- 橱柜/衣柜
- 室内/外门



BST01D(A) BST01D(B) BST01D(C) BST01D(D) BST01D(E)



CARRARA(TEN PATTERNS) / BST01D / 1000x3000MM



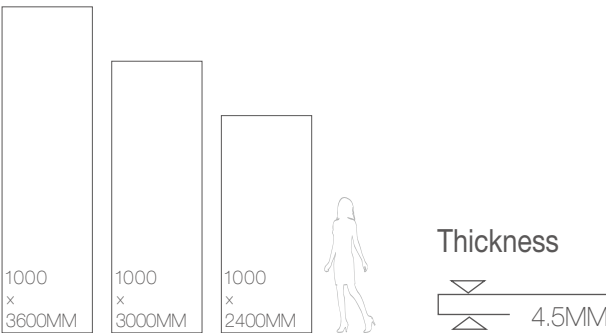
BST01D(A) BST01D(B) BST01D(C) BST01D(D) BST01D(E) BST01D(E1) BST01D(D1) BST01D(C1) BST01D(B1) BST01D(A1)



CUSTOMIZED PRODUCT / BSL02 / 1000x3000MM

客定品 CUSTOMIZED PRODUCT

size



- 吸水率E<0.5%
- 高硬度
- 耐刮磨
- 抗冻
- 耐酸碱
- 防火
- 超强耐脏
- 食品级表面
- 二次装修
- 建筑外墙
- 建筑内墙
- 厨房台面
- 卫浴台面
- 餐台/茶几
- 橱柜/衣柜
- 室内外门





CUSTOMIZED PRODUCT / BSF10B / 1000x3000MM

客定品 CUSTOMIZED PRODUCT

size

Thickness 4.5MM

吸水率E<0.5% 高硬度 耐刮磨 抗冻 耐酸碱 防火 超强耐脏 食品级表面
 二次装修 建筑外墙 建筑内墙 厨房台面 卫浴台面 餐台/茶几 橱柜/衣柜 室内外门

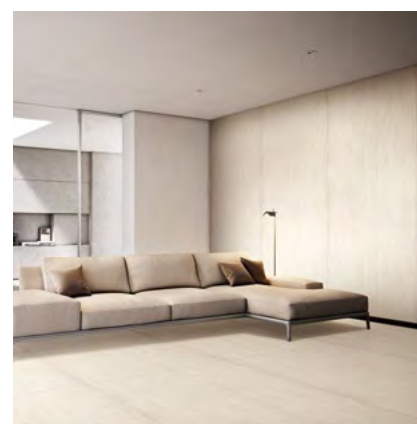


陶瓷薄板应用空间 BIG SLABS APPLICATION SPACE

Modern space design stresses the beauty and functionality of space. And material as the material of space decoration, not only need to have outstanding performance, the scope of application space is also important. Sanrong ceramic board, with humanized design, excellent material, multi-function space application, is a special ceramic board for space, Suitable for home, office, medical, real estate, shopping malls, Public clothing, home, design, construction, 9 major living places. A big board can be used for more space, making every place as comfortable as an imager, adding more fun to life.

现代空间设计，讲究空间的美观性与功能性。而材质作为空间装饰的材料，不但需要有卓越的性能，应用空间的范围同样重要。三荣陶瓷大板，拥有人性化的设计，优良的品质，多功能的空间应用，是为空间专门打造的陶瓷大板，适用于家居、办公、医疗、地产、商场、公装、家居、设计、建筑 9 大生活场所。一种大板，可以实现更多的空间用途，将每一个场所都打造成像家一样舒适的地方，为生活增添更多的乐趣。

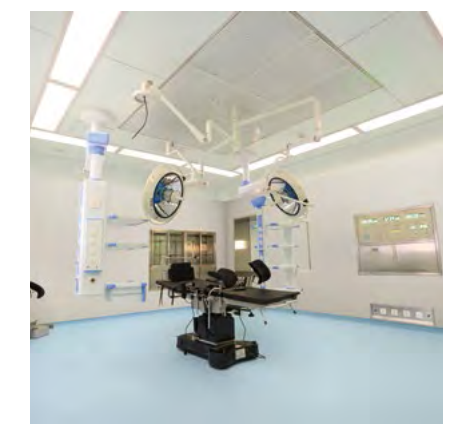
家居篇 Home articles



办公篇 Office articles



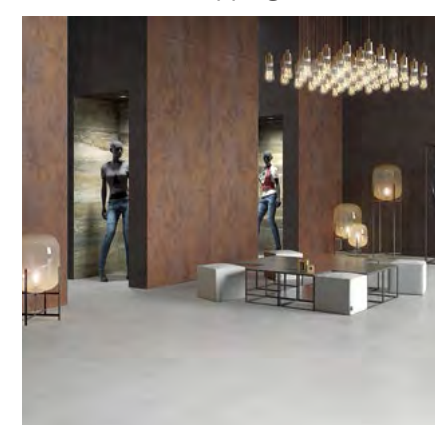
医疗篇 Medical articles



地产篇 Estate article



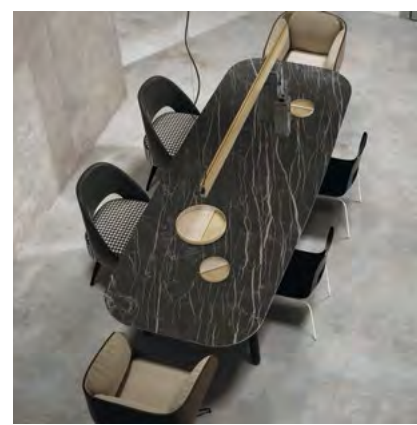
商场篇 Shopping articles



公装篇 Public articles



家具篇 Furniture articles



设计篇 Design articles



建筑篇 Building articles



ELEGANT STYLE

Simple techniques to create a special texture of the space, the color of the unified material into it, further improve the style and grade of space, visual effects more outstanding.

简约的手法打造出质感非凡的空间，将色彩统一的材质融入其中，进一步提升了空间的格调与档次，视觉效果更为出众。



STONE LINE / BSN05A / 1000x3000MM



STYLE SELECTIONS / BSS03 / 1000x3000MM



CARRARA / BST01C / 1000x3000MM



CARRARA(SIX PATTERNS) / BST01B / 1000x3000MM

MODERN MINIMALISM

Simple and uniform tonal decoration, so that public areas of vision open.
Modern very strong space, simple and beautiful lines of large decorative layout,
reflecting the overall design of personality requirements.

简单统一的色调装饰，使公共地方视野开阔。现代感十分强烈的空间，简单
而富有线条美的大板装饰布置，体现出整体设计对个性的要求。



CUSTOMIZED PRODUCT / BJSJ05A / 1000x3000MM



CASTLE / BSR15 / 1000x3000MM



CASTLE / BSR10 / 1000x3000MM



CASTLE / BSR04 / 1000x3000MM

VISUAL EXPERIENCE

The overall space of the hospital is used to represent pure, elegant white as the main color, multi element fusion of this beautiful and generous fashion space, the visual effect is more outstanding.

医院的整体空间采用了纯洁、端庄的白色作为主色，多元素融合出这个美观大方的时尚空间，视觉效果更为出众。



SOLID COLOR(GLAZED) / BSP05E+BSP07A / 1000x3000MM



EMPIRE / BSD01 / 1000x3000MM

ELEGANT DECORATION



ELEGANT FASHION

The multi-element fusion creates this beautiful and generous fashion space, displays the modern style charm, lets the person want to relax the tight body and mind, understands this modern high quality life comfortable rhythm.

多元素融合打造出了这个美观大方的时尚空间，表现出现代风格的魅力，让人想要放松紧绷的身心，体会这现代优质生活的舒适节奏。



GOLDEN AGE / BGA05(F)+BGA06(F)
RUST / BSX06(F)
1000x3000MM



CASTLE / BSR05
CARRARA(FOUR PATTERNS) / BST01E
1000x3000MM

MODERN SPACE

The beautiful board matches the light and shadow effect, which makes the color and texture of the space more charming. Every detail accords with the modern minimalism style.

精美的大板搭配上光影效果，令空间的色泽与质感倍加迷人，每一个细节，都符合现代极简主义的风格。



MERCURY / BMCM05+BMCM08 / 1000x3000MM



CARRARA(TEN PATTERNS) / BST01D
GOLDEN AGE / BGA05(F)
1000x3000MM

ROMANTIC ROOM

In the clean and clean space, both the modern personality of the big board, but also rich in the antique color of household supplies, the two do not show sudden, but also highlight its charming, create a harmonious, natural, romantic room atmosphere.

在干净明洁的空间之中，既有现代个性的大板，也有富有复古颜色的家居用品，两者不显突兀，更突显它的迷人，营造出和谐、自然、浪漫的居室氛围。



SILICASTONE / BSO05+BSO15
CUSTOMIZED PRODUCT / BSNM10C
1000x3000MM



CARRARA (SIX PATTERNS) / BST01B
WOOD / BSY08
1000x3000MM

ARTISTIC FLAVOR

A very strong sense of modern sense of space, simple and rich decorative layout, with the rich artistic flavor of the collection, for space added the beauty of fashion and art.

现代感十分强烈的空间，简单而富有线条美的装饰布置，再搭配富有艺术气息的珍藏品，为空间添加了时尚与艺术的美感。



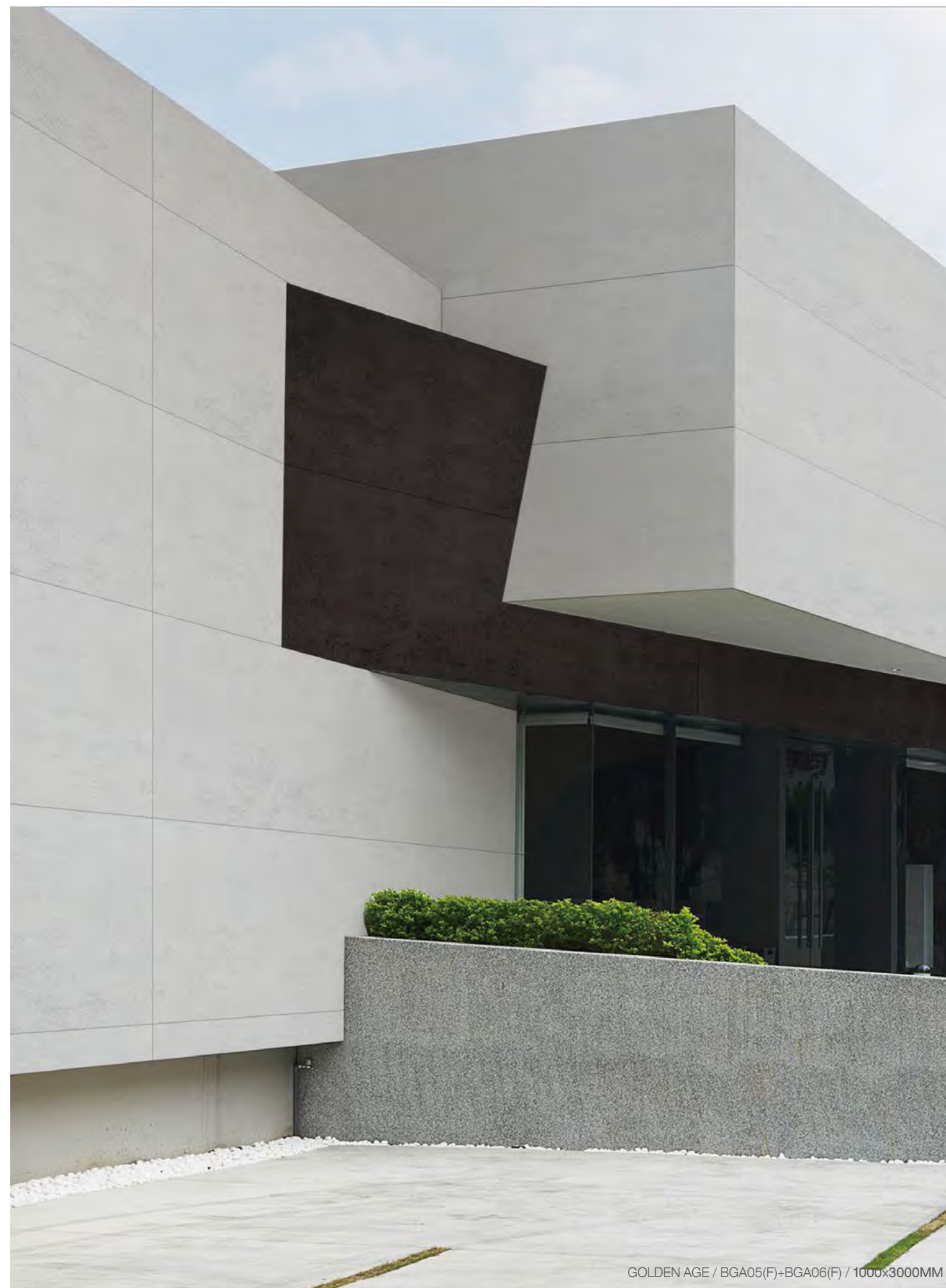


NEBULA / BNB09
CARRARA(FOUR PATTERNS) / BST01E
1000x3000MM

WALL DECORATION

The exterior wall decorated with the elegant and elegant board has a concise line beauty, the outer outline of the building is perfectly presented, the whole is more stereoscopic, and the modern sense of fashion is rich.

用曼美高雅的大板装饰的外墙，拥有简练的线条美，将建筑的外轮廓完美地呈现出来，整体更加立体，富有现代时尚感。



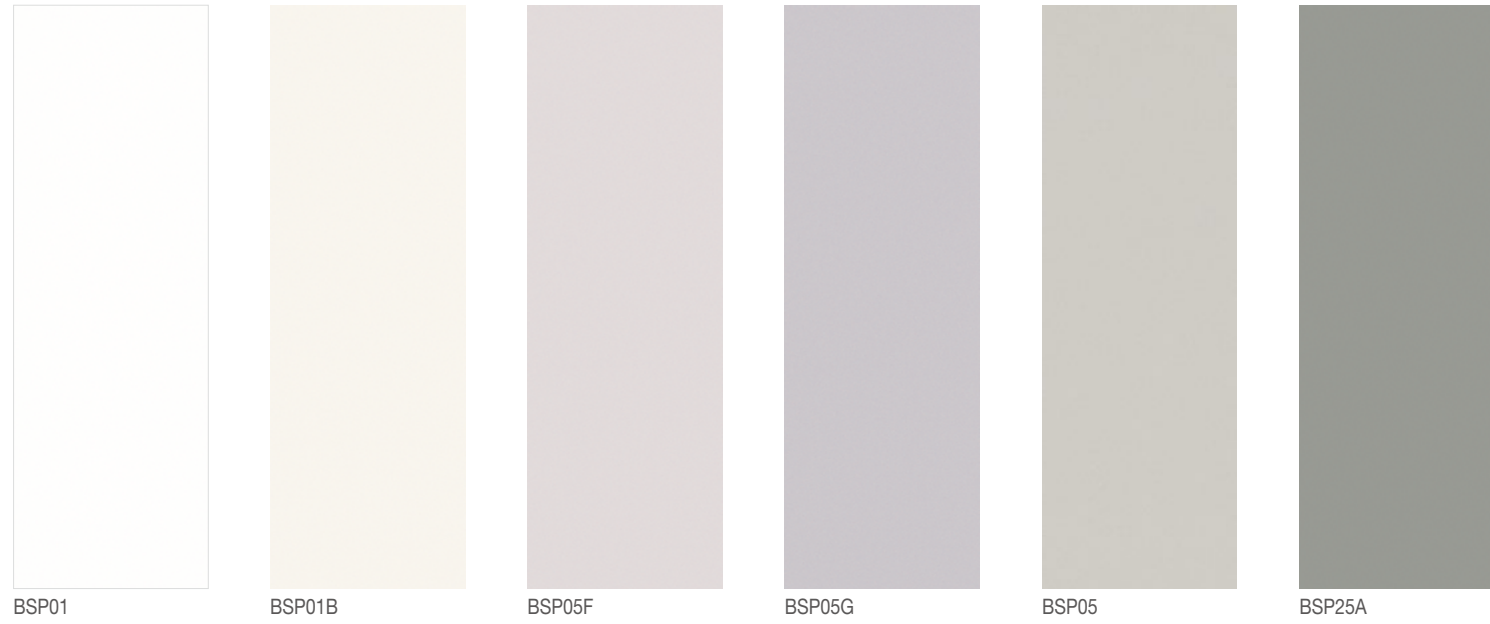


陶瓷薄板工程案例 (部分) KEY PROJECT LIST(PART)

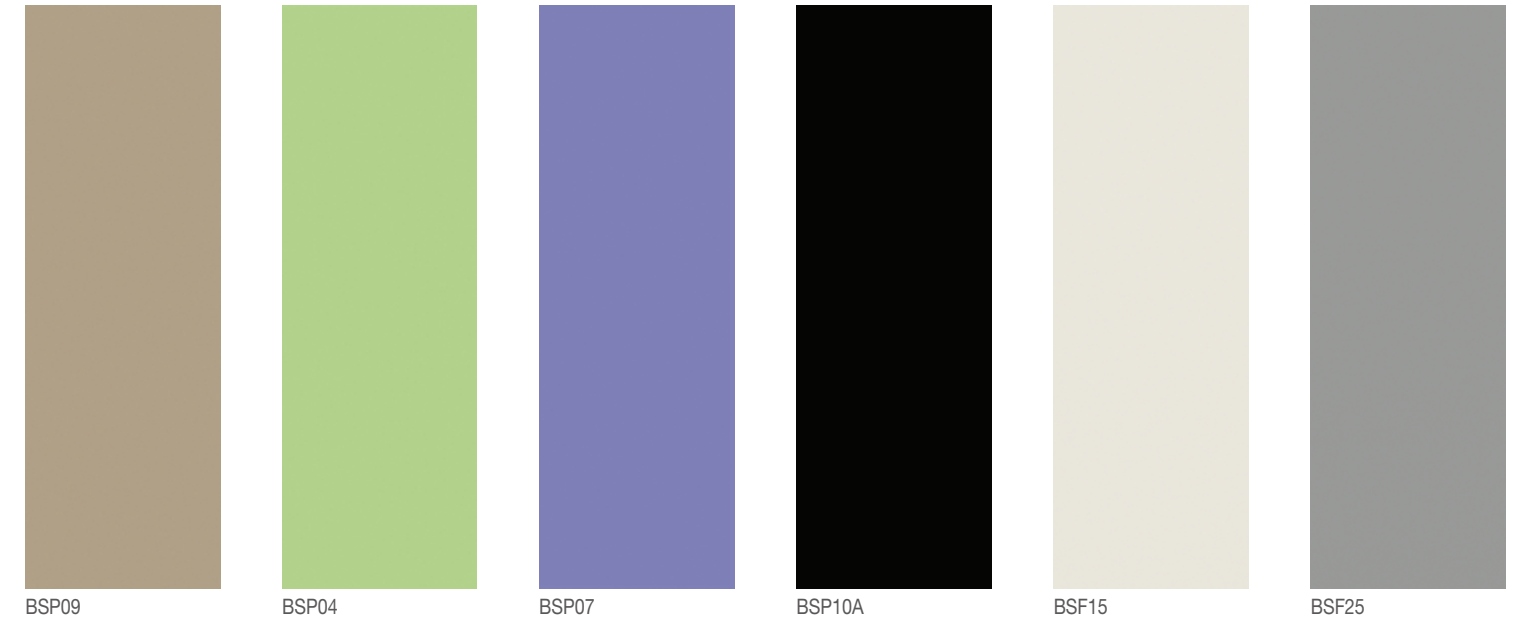
序号	省份	工程名称
1	福建省	厦门市中山医院新住院大楼
2	福建省	厦门市向阳坊食品有限公司 (厦门 / 福州 / 天津)
3	福建省	福州市女子监狱办公楼
4	福建省	福州市连江五中文体楼
5	福建省	福州市南京军区福州总院
6	福建省	莆田市第一医院
7	福建省	泉州市海关报关查验中心
8	福建省	龙岩市高速公路服务区
9	福建省	龙岩市第三医院
10	江西省	高安市群乔集团公司厂房
11	江西省	吉安市王府井中环商业广场
12	广东省	深圳市深业上城
13	广东省	深圳市华润柏瑞花园 (南区)
14	广东省	深圳市半岛城邦三期
15	广东省	深圳市创凌通科技大厦
16	广东省	深圳市基金大厦
17	广东省	深圳市地铁科技大厦
18	广东省	深圳市宝安嘉州商务中心
19	广东省	深圳市金凤凰装饰总部大楼
20	广东省	深圳市金地龙城中央
21	广东省	东莞市小天才科技有限公司研发中心
22	安徽省	五河县人民医院
23	湖北省	武汉市景瑞白沙洲会所
24	重庆市	重庆市腾讯西南总部大楼
25	四川省	成都市麓湖生态城
26	浙江省	杭州市景瑞天赋小区
27	上海市	上海市申通地铁 17 号线 (汇金路站、青浦路站)
28	山西省	太原市中海迎泽桥小区
29	陕西省	西安市高科麓湾国际社区
30	河北省	石家庄市心脑血管医院
31	天津市	天津市中央大道海河隧道
32	天津市	教育警示中心
33	天津市	正融科技大楼
34	北京市	中国电子城总部
35	辽宁省	沈阳半山华府花园
36	内蒙古自治区	赤峰市赤峰学院第二附属医院
37	内蒙古自治区	锡林郭勒盟医院
38	内蒙古自治区	巴彦淖尔市医院
39	韩国	NH 农协保险公司大厦
40	美国	洛杉矶希尔顿酒店



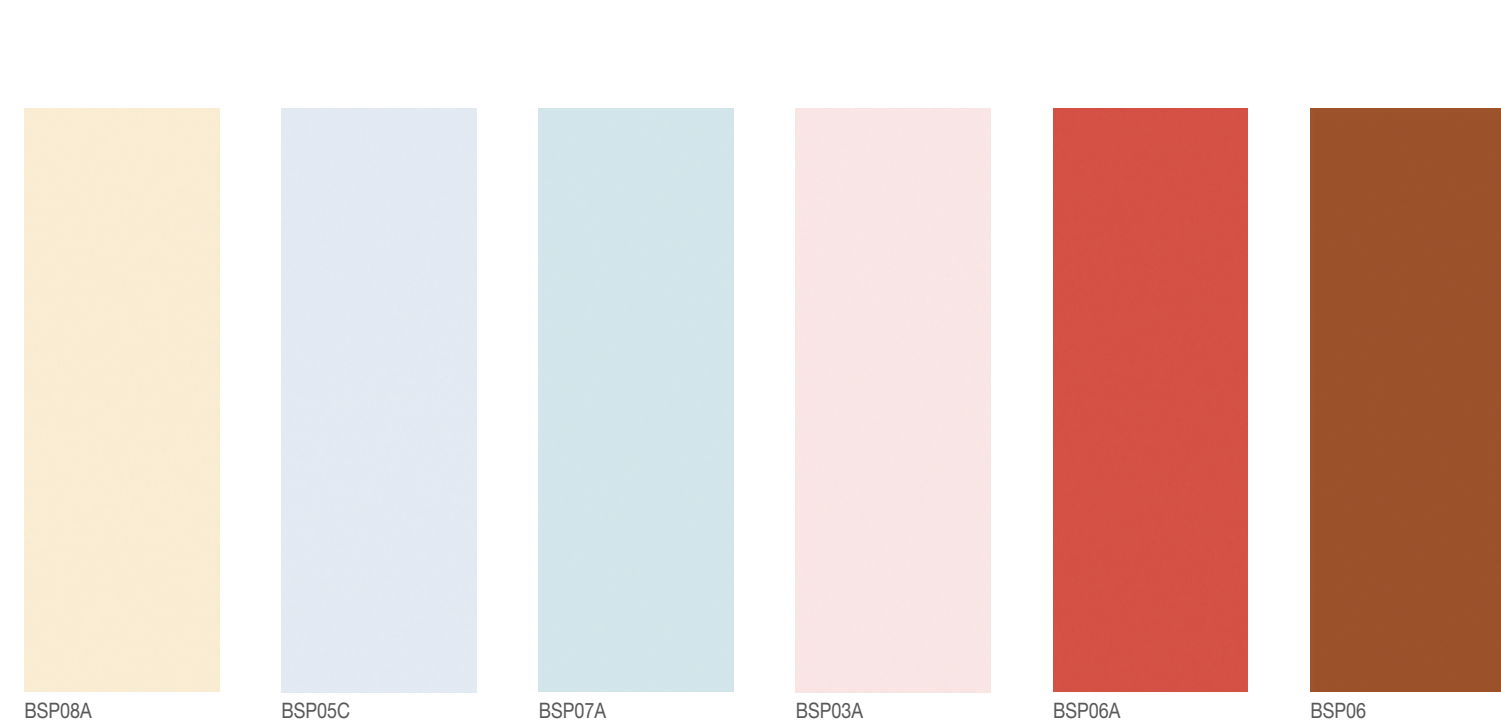
纯色 (釉面)
SOLID COLOR (GLAZED)



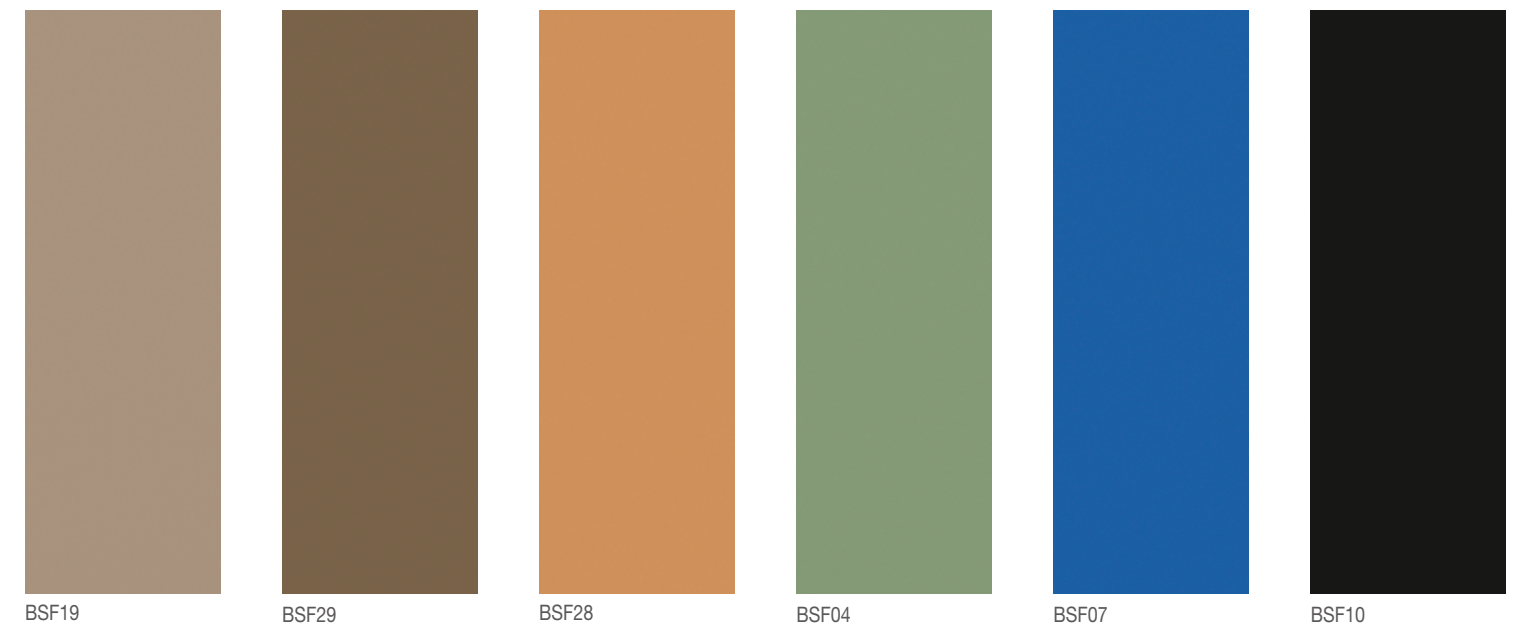
纯色 (釉面)
SOLID COLOR (GLAZED)



纯色 (通体)
PURE COLOR (FULL BODY)

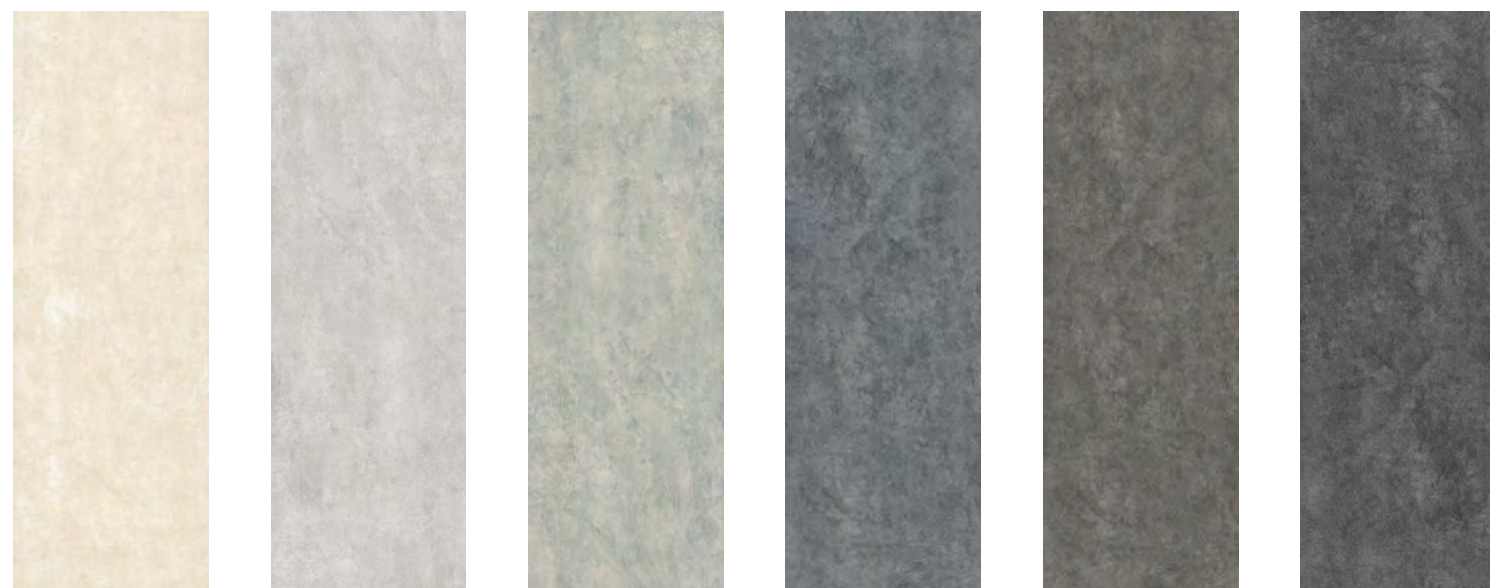


纯色 (通体)
PURE COLOR (FULL BODY)





古堡
CASTLE



BSR02 BSR05 BSR15 BSR07 BSR04 BSR10

艾绅
ANCIENT WOOD



BSV05 BSV08 BSV09 BSV10 BSV19 BSV06

摩瑞
MERCURY



BMCM08 BMCM09 BMCM05 BMCM15 BMCM25 BMCM10

沃德
WOOD



BSY01 BSY02 BSY08 BSY03 BSY06 BSY09



微风
BREEZE



BSI02 BSI05 BSI05A BSI06 BSI09 BSI10

硅岩
SILICASTONE



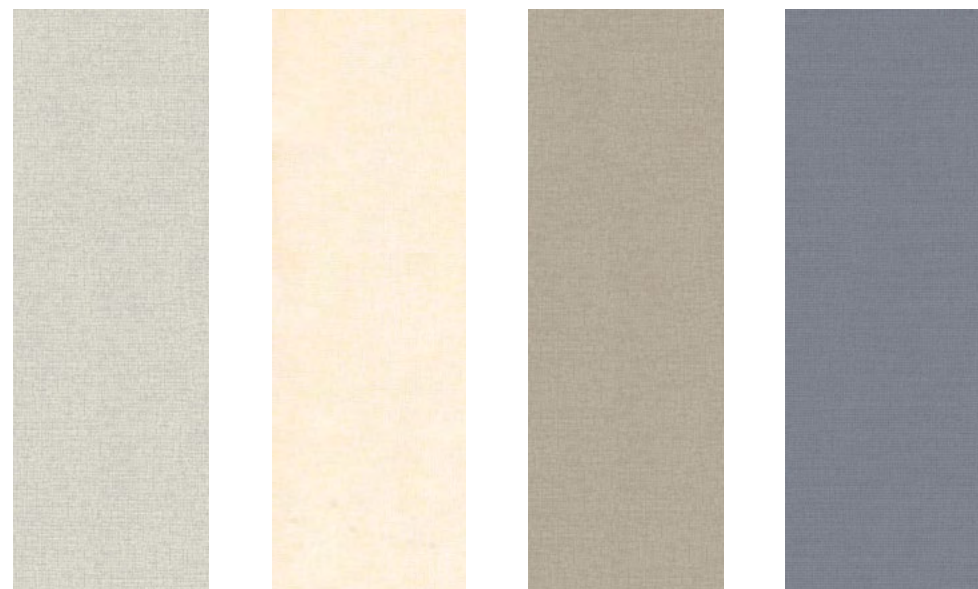
BSO05 BSO15

帝国
EMPIRE



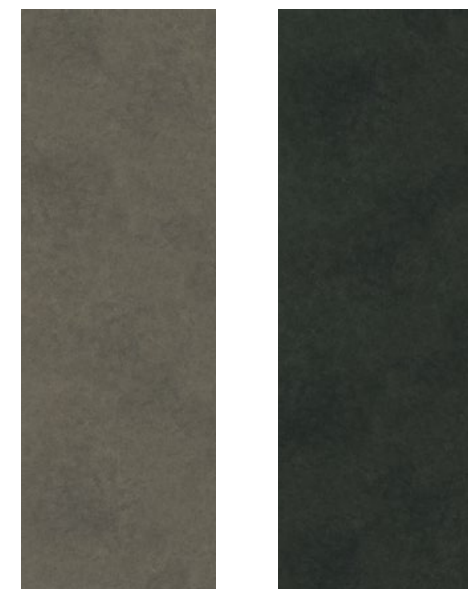
BSD01 BSD02 BSD05 BSD10

布纹
WALL PAPER



BSZ05 BSZ08 BSZ09 BSZ10

纳布
NEBULA



BNB09 BNB10

铁锈
RUST



BSX06(F) BSX07(F)

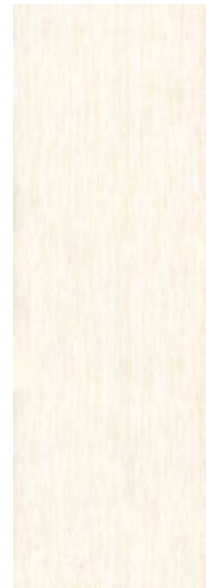
高登
GOLDEN AGE



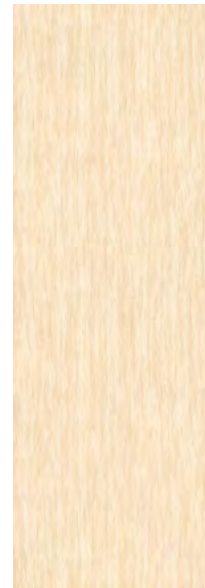
BGA05(F) BGA09(F) BGA10(F) BGA06(F)



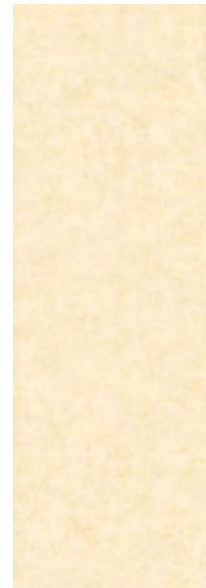
时尚
STYLE SELECTIONS



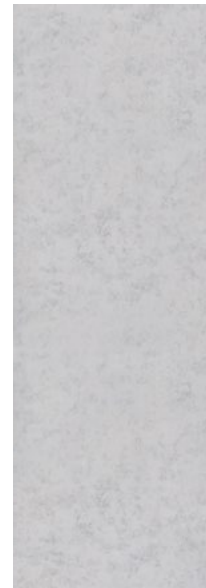
BSS03



BSS02



BSP18



BSP15

线石
STONE LINE



BSN08A



BSN05A

水泥
CEMENT



BSA08



BSA05

珍珠
PEARL



BSG01A



BSG10B



BSU01



BSU10

威尔
WAVE

麻石
GRANITE



BSF08A



BSF10A

卡拉拉 (一体六面)
CARRARA (SIX PATTERNS)



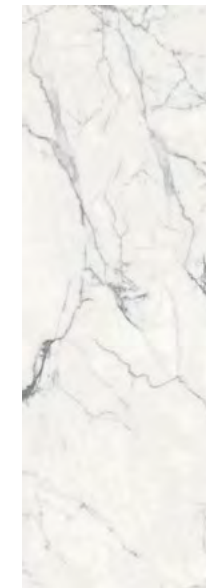
BST01B(A)



BST01B(B)



BST01B(C)



BST01B(D)



BST01B(E)



BST01B(F)



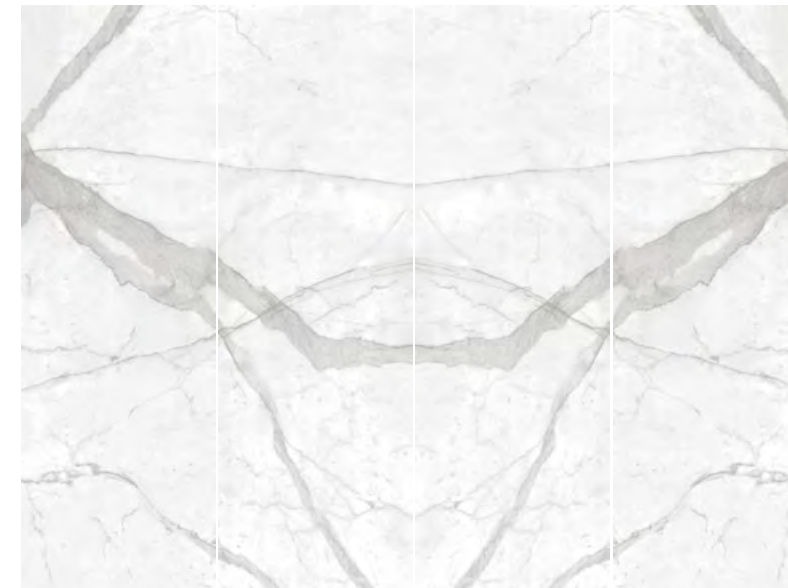
卡拉拉(对拼)
CARRARA(SYMMETRY)



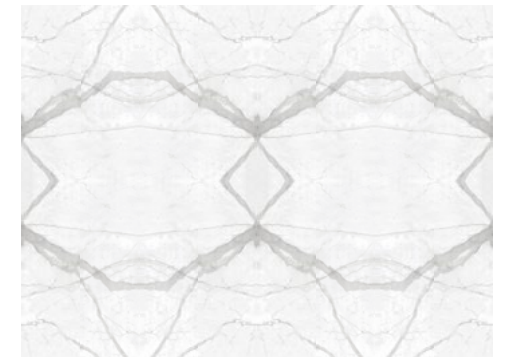
BST01C(A) BST01C(B)



卡拉拉(四连拼)
CARRARA(FOUR PATTERNS)



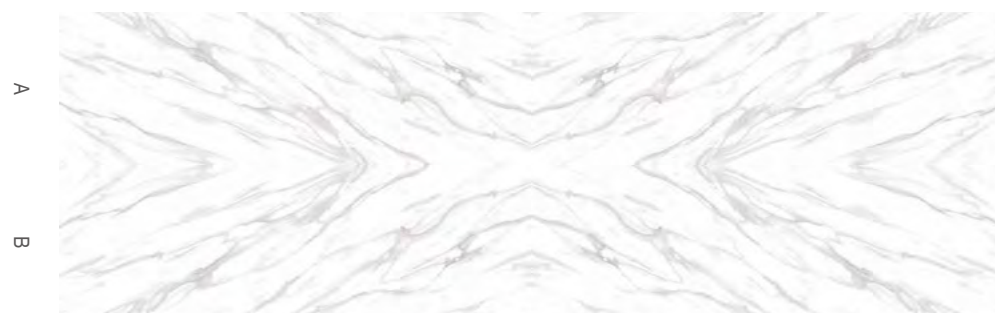
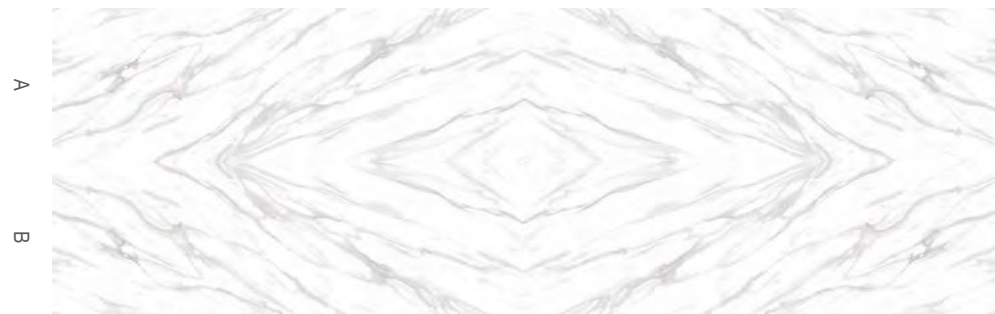
BST01E(A2) BST01E(A1) BST01E(B1) BST01E(B2)



卡拉拉(十连拼)
CARRARA(TEN PATTERNS)



BST01F(A) BST01F(B)



BST01D(A) BST01D(B) BST01D(C) BST01D(D) BST01D(E) BST01D(E1) BST01D(D1) BST01D(C1) BST01D(B1) BST01D(A1)



客定品
CUSTOMIZED PRODUCT



施工说明 TECHNICAL DETAILS

搬运 HANDLING



The manual suction tray can be installed on the other side of the big board for easy movement.

可安装手动吸盘在大板另一面，方便拿起。



Install the metal support on the back of the big board, and fix it on the big board to increase the stability of the big board.

在大板背部安装金属支架，固定在大板上增加稳定性。



It is suggested that truck transportation and forklift trucks be lifted to reduce the damage of the fixed plate.

建议使用货车运输和叉车抬降，做好固定大板的工作，以免破损。

钻孔 DRILLING



The manual cutting machine can cut the square adjusting holes on the large plate at any time.

手动切割机可以任意切割需要的方形调孔。



First place the position of the drilled hole in the ceramic plate and then drill it with a diamond-shaped round drill bit.

先在陶瓷大板把将要钻孔位置定好位，再用安装有金刚石圆形钻头钻孔。



Once the ceramic plate is drilled or cut, it must be carefully handled and placed.

陶瓷大板一旦钻孔或切割后要小心搬运和放置。

切割 CUTTING



It is suggested that the cutting route should be planned before cutting the big board.

建议在切割前，先对大板进行切割路线的规划。



Use a glass knife that cuts straight lines to cut down on the glaze of a large plate for easy cutting.

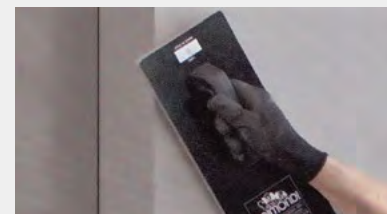
用切割直线的玻璃刀在釉面划下割线。



Use the cutting machine to cut along the cutting line, grinding paper to smooth the sharp edges.

用切割机沿着切割线进行切割，用磨砂纸将锋利边缘磨平。

铺贴 PAVING



Use the scraper to spread the adhesive on the floor and the big board, and smear it flat to facilitate the placement.

用刮刀把粘合剂平整地涂抹在地板与大板上。



After big board paving, please reserve 2mm space to prevent cold shrink and heat rise.

大板铺贴后，预留 2mm 空隙预防冷缩热胀。



After laying, the large plate is compacted, so that the inner layer is completely combined to ensure smooth surface.

铺贴后将大板压实，让内层完全密合并保证表面平整。

Advantage / 产品优势

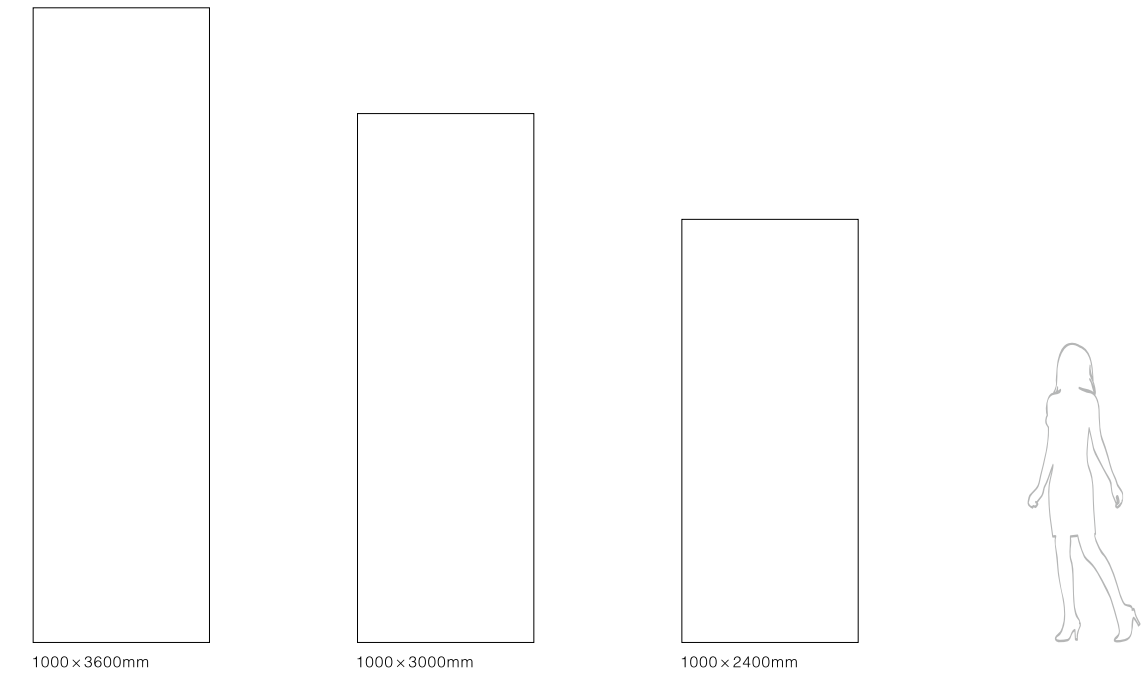
	Ultrathin 超薄 大规模超薄薄板, 材料轻薄, 大大降低了建筑物荷载, 增加了使用空间。
	Low water absorption 低吸水性 E≤0.5%的吸水率, 污渍、水迹无法渗透, 抗菌抑菌, 防潮防湿永不变质。
	High hardness 高硬度 应用于外墙不惧风沙刻蚀, 应用于厨卫台面, 家具面板可直接在台面操作。
	Scratch resistance 耐刮磨 刀锋过后不留痕迹, 具有优异的耐磨损性能。
	Frost resistance 抗冻 用于冰冻的环境, 不龟裂, 不剥落。
	Crazing resistance 抗釉裂 在任何恶劣气候环境均不影响高品质的特性。
	Fire resistance / High temperature resistance 防火/耐高温 耐高温, 明火烧灼不变色, 无气味、不冒烟, 不释放有害物质。
	Corrosion resistance / Acid and alkali resistance 耐腐蚀/耐酸碱 日常洗涤剂及维护再无后顾之忧。
	Easy to clean 易清洁 表面孔隙率近乎于零, 易清洁保养, 维护成本极低。
	Stain resistance 超强耐污 污渍、水迹无法渗透, 不留污迹。
	Antibacterial and bacteriostasis 抗菌抑菌 水迹无法渗透, 抗菌抑菌, 防潮防湿永不变质。
	Food grade surface 食品级表面 无机材料无毒无辐射, 台面即是砧板可直接用于食物加工。

Application Range / 应用范围

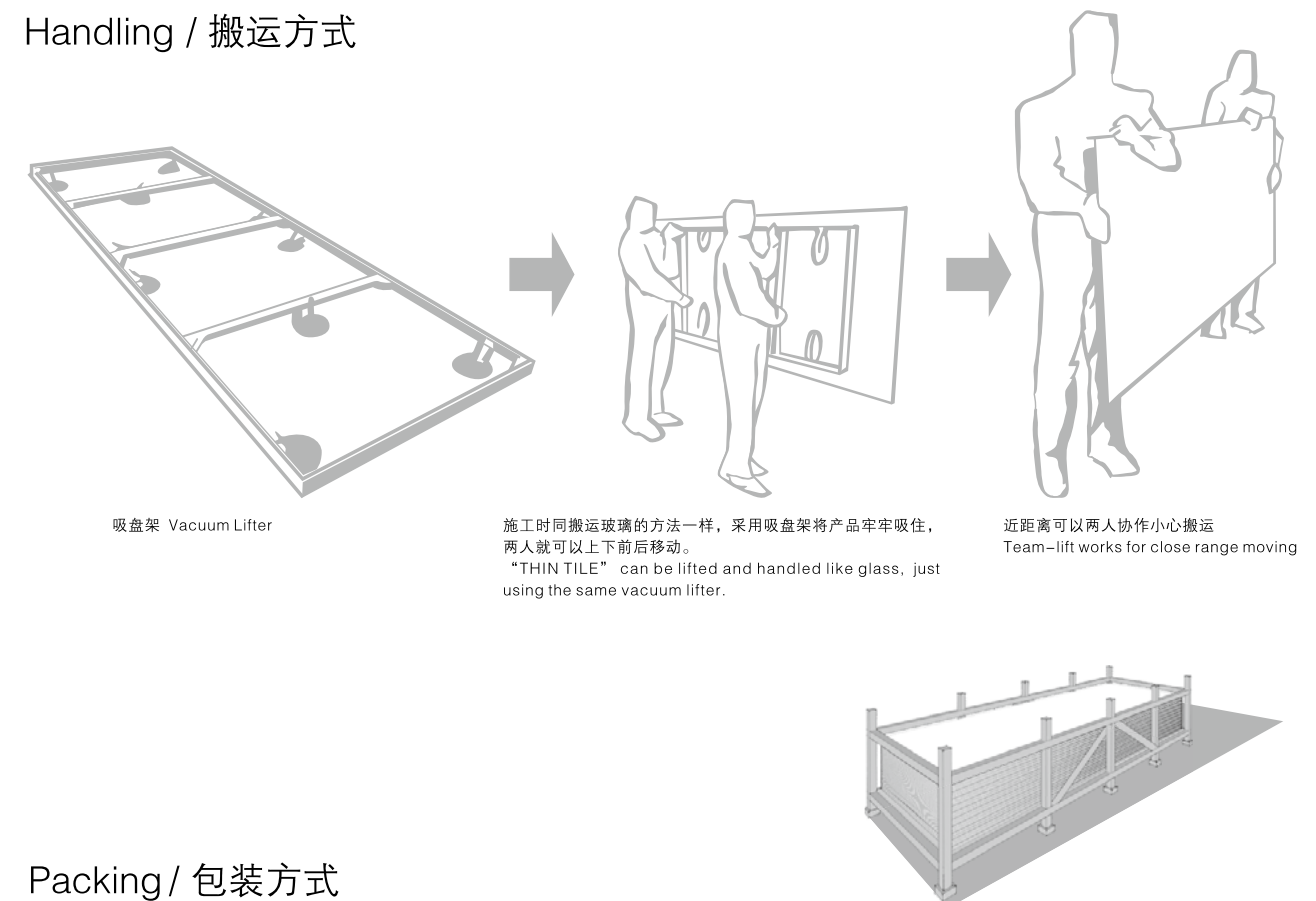
	Redecorating 二次装修 不必敲下旧瓷砖, 施工时直接粘帖覆盖旧瓷砖安全、省时、又省工。
	Ventilated Facade 建筑外墙 大规模铺贴, 迅速方便, 恢弘大气, 抗冻、抵御紫外线侵蚀不变质。
	Interior walls 室内墙砖 豪华、优雅, 防潮防湿、无毒无辐射, 不留污渍不变色。
	Kitchen countertops 厨房台面 尺寸灵活多变、抗冲击、耐刮磨、食品级表面, 健康安全。
	Bathroom countertops 卫浴台面 防潮防湿、抗菌抑菌、易清洁保养。
	Dining / Coffee table 餐台/茶几 取代木质板材, 不留污渍, 保持持久洁净。
	Cabinet, Wardrobe 橱柜、衣柜 防火耐高温、耐腐蚀耐盐酸, 易清洁。
	Door 室内外门 防火、防潮防湿、抗冻、抵御紫外线侵蚀不变质。
	Composite panel partition 复合隔墙板 背面加工贴上蜂窝铝板的隔墙板是为了强化隔音、隔冷热的最佳绝缘体。
	Compound baseplate 复合底板 可复合于名贵石材作为底板, 从而大幅降低成本。
	Heating panel 发热板 与石墨烯结合铺贴室内墙, 导热快, 无异味, 无辐射, 不漏电, 环保又安全。
	Home decoration painting 瓷板画 高达95%以上的色彩高仿真效果, 可以配合设计搭配任何素材。

电话: 188 2323 4667

Dimensions / 基本尺寸



Handling / 搬运方式



Technical Data / 技术参数

	Industrial Standard 工业标准 【参照陶瓷板国家标准GB/T23266-2009】	Sanwon THIN TILE 三荣“新瓷”数据
	Springiness limit 弹性限度 No less than 12mm 弹性限度不小于12mm	15mm
	Water absorption 吸水率 Average E≤0.5%, Individual E≤0.6% 平均值 E≤0.5%, 单值 E≤0.6%	E≤0.5%
	Modulus of rupture 断裂模数 Average ≥45MPa, Individual ≥40MPa 平均值 ≥45MPa, 单值 ≥40MPa	≥50MPa
	Deep abrasion resistance 耐磨性 Floor tile: UL, ≤150mm ³ ; GL, minimal class3@750cycles 地板用无釉陶瓷板耐磨损体积不大于150mm ³ ; 地板用有釉陶瓷板耐磨性不低于3级(转数750转)	Qualified 合格
	Crazing resistance 抗釉裂性 Free from visible defects after test 有釉陶瓷板经抗釉裂性试验后应无裂纹或剥落	Qualified 合格
	Frost resistance 抗冻性 Free from visible defects after test 用于冰冻环境的陶瓷板经抗冻试验后应无裂纹或剥落	Qualified 合格
	Stain resistance 耐污染性 Minimum class3 for glazed tile 有釉瓷质板经耐污染试验后应不低于3级	Class4
	Thermal shock resistance 抗热震性 Free from visible defects after test 经抗热震试验后应无裂纹或剥落	Qualified 合格
	Household Chemicals 家庭用化学 Minimum UB for unglazed tile 无釉瓷质板应不低于UB级	UA/GA
	Swimming Pool Salts 游泳池盐类 Minimum GB for glazed tile 有釉瓷质板应不低于GB级	
	Acids 酸溶液 Manufactory state the class level passed 制造商报告产品耐低浓度酸腐蚀性的级别	UA/GA
	Alkalis 碱溶液 Manufactory state the class level passed 制造商报告产品耐低浓度碱腐蚀性的级别	UA/GA
	Length & Width 长度和宽度 ±1.0 mm	±0.8 mm
	Thickness 厚度 ±0.3 mm	±0.2 mm
	Opposite size difference 对边长度差 ≤1.0 mm	≤0.8 mm
	Diagonal difference 对角线长度差 ≤1.5 mm	≤1.2 mm

Packing / 包装方式

Product Size 产品规格 (mm)	Quantity 包装片数 pcs/ctn (片/铁架)	Coverage 包装面积			Weight 包装重量		
		m ² /pcs (m ² /片)	pcs/m ² (片/m ²)	m ² /ctn (m ² /铁架)	Kg/pcs (公斤/片)	Kg/m ² (公斤/m ²)	Kg/ctn (公斤/铁架)
1000x2400x4.5	80	2.4	0.42	192	24	10	2100
1000x3000x4.5	60	3.0	0.33	180	30	10	2000
1000x3600x4.5	50	3.6	0.28	180	36	10	2000